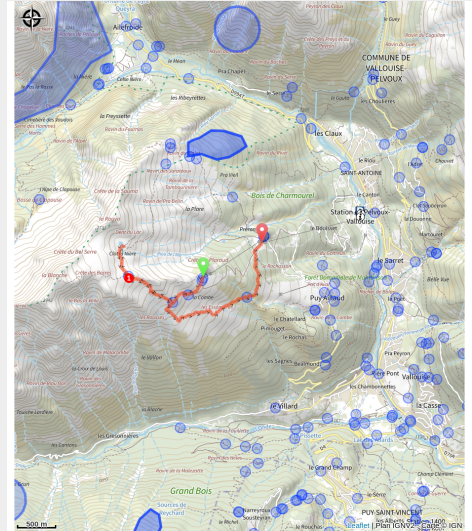


Puy Aillaud Lake

Parc national des Ecrins



Randonnée lac de Puy Aillaud (PNE)



A beautiful journey above the valley, departing from the ski lifts of Pelvoux resort.

The demanding trail may seem a bit tough, but the reward is there, with an ever-expanding panorama. The lake, nestled in the hollow of the Rouya summit, gives the end of the hike a more intimate character.

Useful information

Practice : By walk

Duration : 3 h

Length : 6.0 km

Trek ascent : 424 m

Difficulty : Easy

Type : Return trip

Themes : Fauna, Flora, Lake and glacier, Panorama

Trek

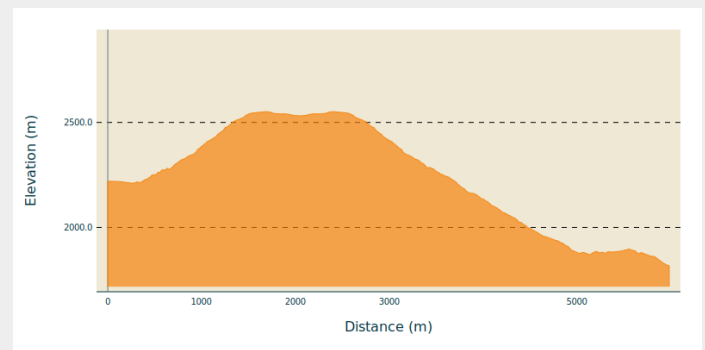
Departure : Préron Chairlift

Arrival : Pelvoux ski resort

Markings : — PR

Cities : 1. Vallouise-Pelvoux

Altimetric profile



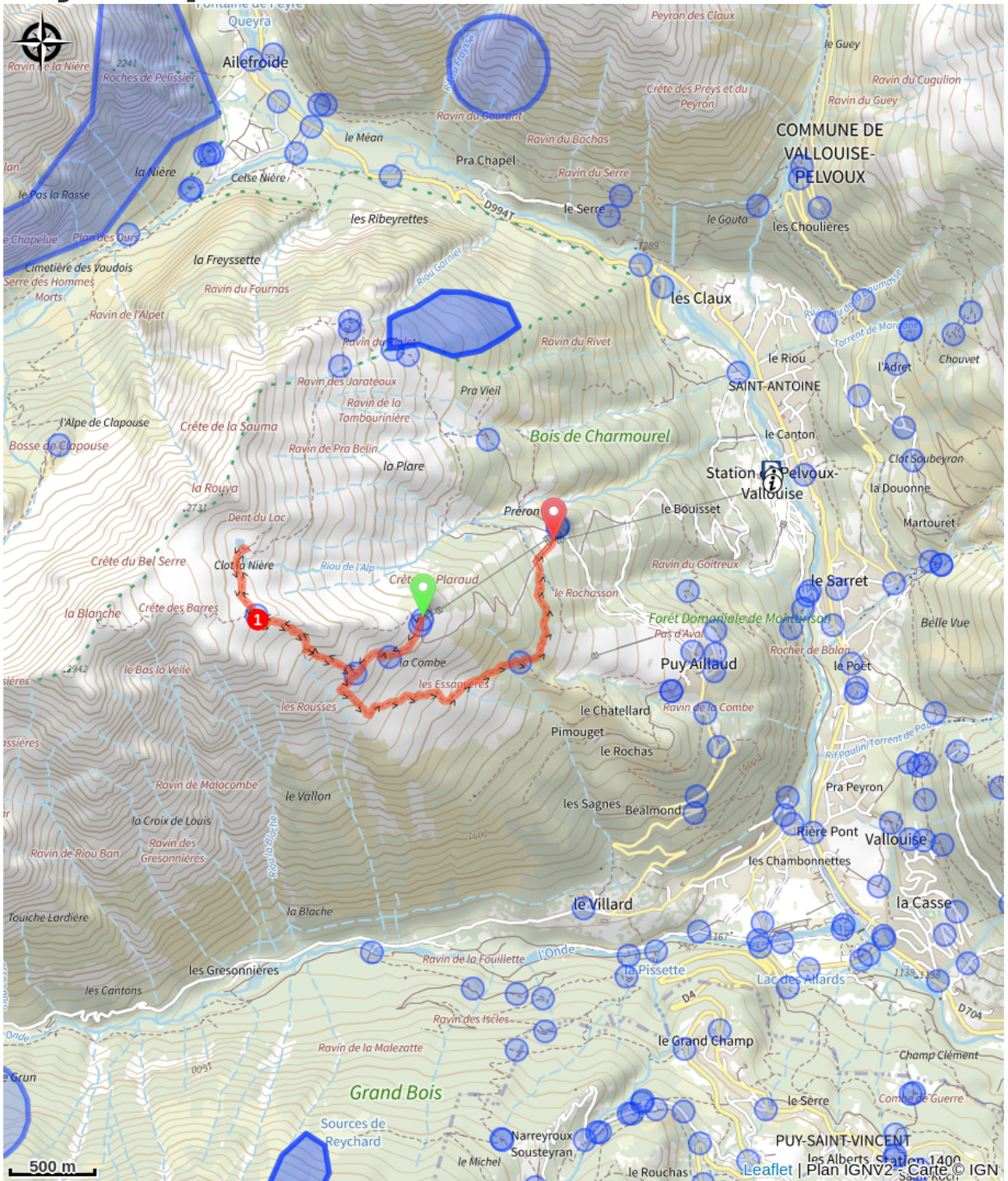
Min elevation 1818 m Max elevation 2551 m

Starting from the top of the Crête chairlift, take the trail that climbs towards Lac de Puy Aillaud following the markers.

1. Before reaching 2600m in altitude, the trail forks to the right towards Lac de Puy Aillaud.

Return: the return can be made via the Préron chairlift or via the piste that descends through the resort to the car park.

On your path...



All useful information

Advices

As the hike is mostly on a south-facing slope, it is best to set off early on hot days and make sure to bring plenty to drink.

How to come ?

Access

From the N94 Gap-Briançon road, turn off at L'Argentière-la-Bessée heading towards Puy-Saint-Vincent - Vallouise (D994E). In Vallouise, continue towards Pelvoux-Station.

Advised parking

Pelvoux ski resort

Information desks

Bureau d'Information Touristique de Vallouise

Place de l'Eglise, 05340 Vallouise

contact@paysdesecrins.com

Tel : +33(0)4 92 23 36 12

<https://www.paysdesecrins.com/>



Office de tourisme de Pelvoux

Station de Ski de Pelvoux, 05340 Vallouise-Pelvoux

contact@paysdesecrins.com

Tel : 09 63 53 61 67

<http://www.paysdesecrins.com/>



Domaine d'altitude de Pelvoux

266 Route des Essarts, 05340 Vallouise-Pelvoux

info@ski-pelvoux.com

Tel : 04 92 23 31 48

<https://www.ski-pelvoux.com/>



Source



Pays des Ecrins

<https://www.paysdesecrins.com>