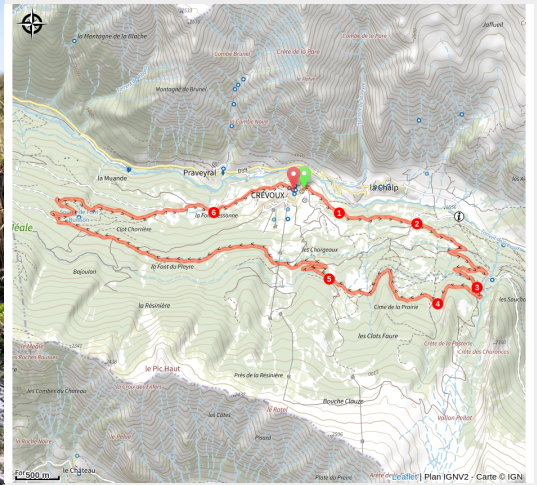


## Loop 57 - Le Méale

Crévoux



(Kinaphoto)



*A pleasant loop in summer, on shady forest tracks in Crévoux and the Parpaillon massif.*

Departing from this family-friendly resort, the Méale is a mountainous loop through woodland and clearings where herds of cows have replaced skiers.

You can take the red route no. 58 "Crévoux" if you want to extend the route.

### Useful information

---

Practice : Gravel

---

Duration : 1 h 15

---

Length : 14.7 km

---

Trek ascent : 447 m

---

Difficulty : Easy

---

Type : Loop

---

Themes : Panorama, Pastoralism

# Trek

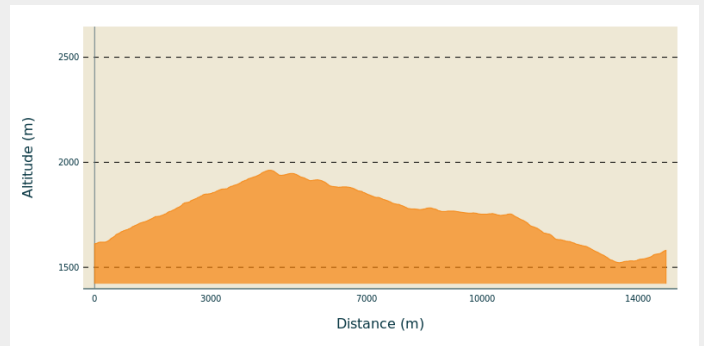
**Departure** : Crévoux

**Arrival** : Crévoux

**Markings** : — PR

**Cities** : 1. Crévoux

## Altimetric profile



Min elevation 1523 m Max elevation 1963 m

1. From the village square, head up the street that starts at the war memorial. At "Champ La font 2", take the stony track opposite towards the hamlet of La Chalp. Continue straight ahead on the main path until you reach the road.
2. At the bend, ascend the road on the right to the picnic area (Cabane des Espagnols)
3. At the picnic area, turn right twice onto the uphill path (there is a spring if you stay on the road after the Réal bridge on the right). Stay on the main track (Route forestière de Bouche Clauze),
4. At the bend of a track, descend to the right.
5. At the track, descend to the right towards Crévoux, about 3.5 km. Continue straight down the main track.
6. Slow down and take the barely visible path on the right towards the county town. At the end of the path, join the road and Crévoux on the right.

# On your path...



 Crévoux (A)

 Cabane des Espagnols (B)

# All useful information

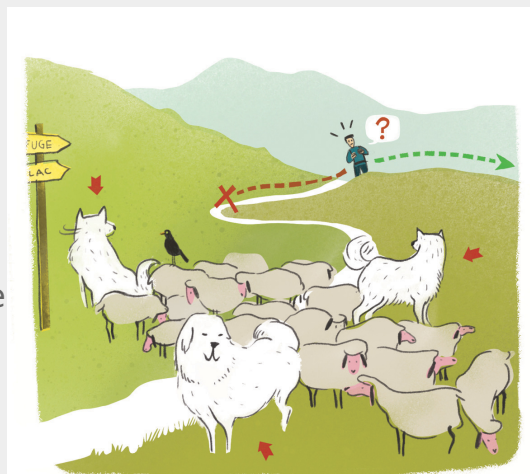
## **i** Herd protection dogs

In mountain pastures, protection dogs are there to protect the herds from predators (wolves, etc.).

When I hike I adapt my behavior by going around the herd and pausing for the dog to identify me.

Find out more about the actions to adopt with the article "[Protection dogs: a context and actions to adopt](#)".

Tell us about your meeting by answering this [survey](#).



## **!** Advices

Avant de partir vérifiez l'état de votre vélo, surveillez la météo et équipez vous selon la saison et la durée de votre randonnée.

Vous évoluez en zone de montagne, privilégiez des pneus de Gravel large, des freins à disque hydraulique et maîtrisez votre vitesse.

Prudence dans la descente du Hameau de Vière et pour rejoindre la vallée de la Durance.

Pour plus de confort faites appel à un moniteur de cyclisme  
Secours : 112

## How to come ?

### Transports

SNCF: Chorges station, Embrun <https://www.sncf-connect.com/>

Bus : Valserres, La Bâtie Neuve, Chorges, Puy Saint Eusèbe, Puy Sanières, Embrun Baratier, Les Orres, Remollon, Theus, Espinasse

Marseille-Briançon : (LER29)

Marseille, Nice : Lignes Express Régionales (LER) +33 (0)809 400 415

Grenoble : Transisère +33 (0)4 26 16 38 38

Gap-Barcelonnette (LER535)

Carpooling area : Rond point des Orres - 05200 Baratier

Plane:

Marseille Provence Airport (188km) - +33 (0)820 811 414

Grenoble Alpes Isère Airport (158km) - +33 (0)4 76 65 48 48

Lyon Saint Exupéry Airport - (203km) +33 (0)826 800 826  
Turin Caselle Airport - (178km) + 39 011 567 63 76

### Access

From Grenoble, Lyon, Paris : RN 85 or RN 75. At Gap, take the RN 94 towards Briançon.

From Marseille, Montpellier A51 to La Saulce, continue towards Tallard (D942) and Briançon (RN 94).

### Advised parking

Place du village, Crévoux

### Information desks

#### **Tourist office Crévoux**

Le pont du plan, la Chalp, 05200 Crévoux

crevoux@serreponcon-tourisme.com

Tel : +33 (0)7 86 07 56 78

<https://www.crevoux.fr>



### Source



Serre-Ponçon

<https://www.serreponcon.com>

# On your path...

---

## Crévoux (A)

Nestled amongst peaks approaching 3,000m, such as the Grand Parpaillon and Pic Saint André, the village of Crévoux occupies a deep valley that has seen the establishment of several hamlets, including La Chalp, which extends over a narrow alluvial terrace. Once at the heart of a major craft industry, with the rise of basket-making and cabinet-making, the village now revolves around its small ski resort, created in 1937, making it one of the oldest in the Hautes-Alpes.

---

## Cabane des Espagnols (B)

This hut is a memorial to the Spanish refugees who were mobilised in Crévoux to maintain and repair the Parpaillon road, a militarily important road in those troubled times. The Spanish camp at Crévoux was set up in 1939, on the eve of the Second World War and in the twilight of the Spanish Civil War, which saw Franco's victory and the flight of many Spanish republicans to France.