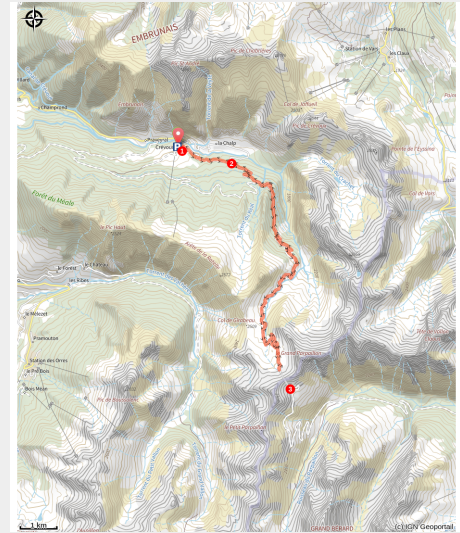


Loop 27 - The Col du Parpaillon

Crévoux



(Emmanuel DANJOU)



A legendary pass, Le Parpaillon (2637 m) is one of the last remaining examples of what a major Alpine pass might have looked like before the era of cars and tarmac.

Discover an unspoilt, pure and wild mountain where the marmots will announce your arrival. Like many roads at the time, this mountain road was built by the military. It's not unusual to come across road bikes that have lost their way after being misled by the classification as a departmental road!

Useful information

Practice : Gravel

Duration : 2 h 15

Length : 24.1 km

Trek ascent : 1064 m

Difficulty : Medium

Type : Return trip

Themes : Panorama, Pass, Top

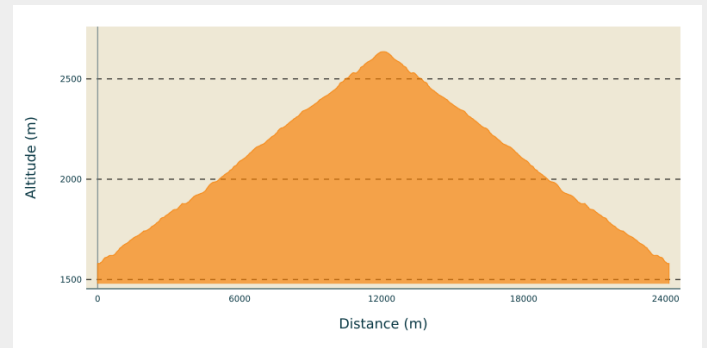
Trek

Departure : Crévoux

Arrival : Crévoux

Cities : 1. Crévoux

Altimetric profile



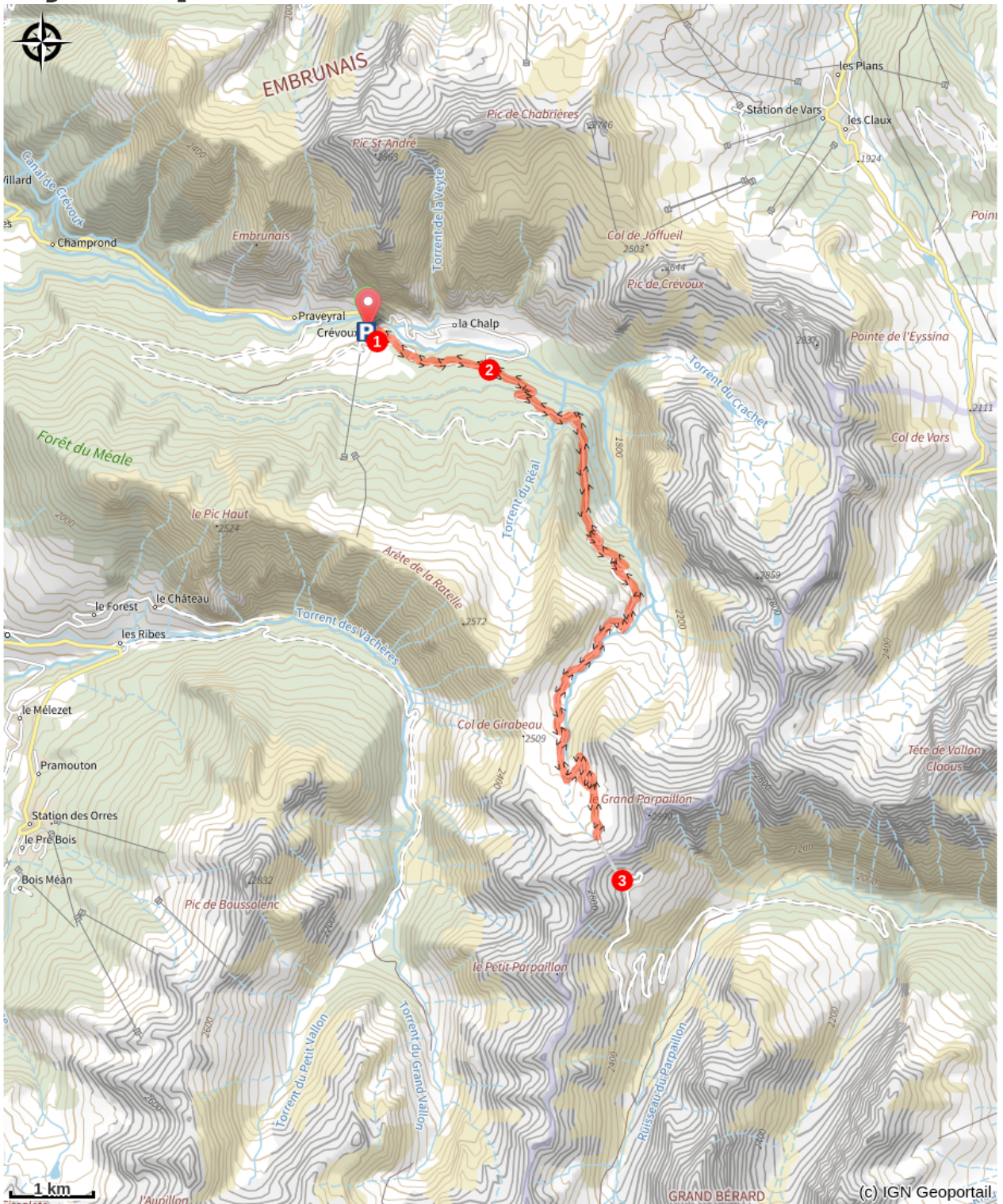
Min elevation 1580 m Max elevation 2637 m

1) From the village square, take the road leading from the war memorial. At "Champ La font 2", climb the gravel track towards the hamlet of La Chalp. Continue straight ahead on the main road. At Travers du Moulin go straight up the track.

2) At the bend go straight on (stony climb). At the bend in the road (D39T), turn right. At the picnic area, continue straight ahead.

3) At the Parpaillon tunnel, go through the tunnel (you will need lights) and turn around to go back down to Crévoux. Follow the route taken on the outward journey back to the village of Crévoux.

On your path...



 Crévoux (A)

 Cabane des Espagnols (B)

All useful information

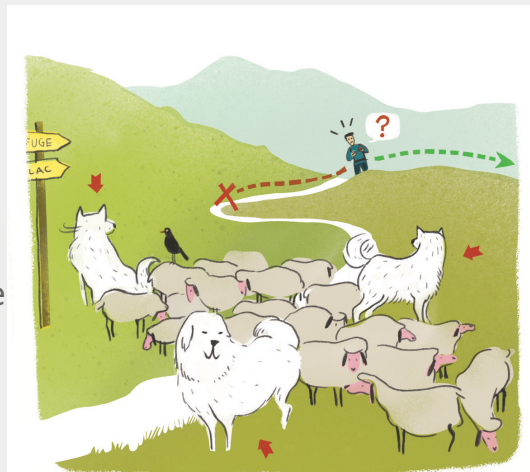
i Herd protection dogs

In mountain pastures, protection dogs are there to protect the herds from predators (wolves, etc.).

When I hike I adapt my behavior by going around the herd and pausing for the dog to identify me.

Find out more about the actions to adopt with the article "[Protection dogs: a context and actions to adopt](#)".

Tell us about your meeting by answering this [survey](#).



! Advices

Avant de partir vérifiez l'état de votre vélo, surveillez la météo et équipez vous selon la saison et la durée de votre randonnée.

Vous évoluez en zone de montagne, privilégiez des pneus de Gravel large, des freins à disque hydraulique et maîtrisez votre vitesse.

Prudence dans la descente du Hameau de Vière et pour rejoindre la vallée de la Durance.

Pour plus de confort faites appel à un moniteur de cyclisme
Secours : 112

How to come ?

Transports

SNCF: Charges station, Embrun <https://www.sncf-connect.com/>

Bus: Valsерres, La Bâtie Neuve, Charges, Puy Saint Eusèbe, Puy Sanières, Embrun Baratier, Les Orres, Remollon, Theus, Espinasse

Marseille-Briançon : (LER29)

Marseille, Nice : Lignes Express Régionales (LER) +33 (0)809 400 415

Grenoble : Transisère +33 (0)4 26 16 38 38

Gap-Barcelonnette (LER535)

Carpooling area : Rond point des Orres – 05200 Baratier

Plane :

Marseille Provence Airport (188km) - +33 (0)820 811 414

Grenoble Alpes Isère Airport (158km) - +33 (0)4 76 65 48 48
Lyon Saint Exupéry Airport - (203km) +33 (0)826 800 826
Turin Caselle Airport - (178km) + 39 011 567 63 60

Access

From Grenoble, Lyon, Paris : RN 85 or RN 75. At Gap, take the RN 94 towards Briançon.

From Marseille, Montpellier A51 to La Saulce, continue towards Tallard (D942) and Briançon (RN 94).

Advised parking

Village Square, Crevoux

Information desks

Tourist office Embrun

Place Général Dosse - BP 49, 05202
Embrun

embrun@serreponcon-tourisme.com

Tel : 0492437272

<https://www.serreponcon-tourisme.com/>



Source



Serre-Ponçon

<https://www.serreponcon.com>

On your path...

Crévoux (A)

Nestled amongst peaks approaching 3,000m, such as the Grand Parpaillon and Pic Saint André, the village of Crévoux occupies a deep valley that has seen the establishment of several hamlets, including La Chalp, which extends over a narrow alluvial terrace. Once at the heart of a major craft industry, with the rise of basket-making and cabinet-making, the village now revolves around its small ski resort, created in 1937, making it one of the oldest in the Hautes-Alpes.

Cabane des Espagnols (B)

This hut is a memorial to the Spanish refugees who were mobilised in Crévoux to maintain and repair the Parpaillon road, a militarily important road in those troubled times. The Spanish camp at Crévoux was set up in 1939, on the eve of the Second World War and in the twilight of the Spanish Civil War, which saw Franco's victory and the flight of many Spanish republicans to France.