

# From Montgardin to Gourniers

Parc national des Ecrins - Montgardin



(CDTE Hautes-Alpes)



*A challenging stage boasting magnificent panoramic views of the lake and mountains.*

A colourful stage combining an exceptional environment (at the gateway to the Ecrins National Park), terraced slopes overlooking the valley and the famous Serre-Ponçon lake. Destination Les Gourniers, the highest hamlet in the municipality of Réallon.

## Useful information

---

Practice : Horse

---

Duration : 6 h

---

Length : 24.3 km

---

Trek ascent : 1247 m

---

Difficulty : Hard

---

Type : Stage


---

Themes : Geology, Lake and glacier, Panorama

# Trek

**Departure** : Ecuries du Rucher,  
Montgardin

**Arrival** : Les Gourniers, Réallon

**Markings** :  GRP  GR

**Cities** : 1. Montgardin

2. Charges

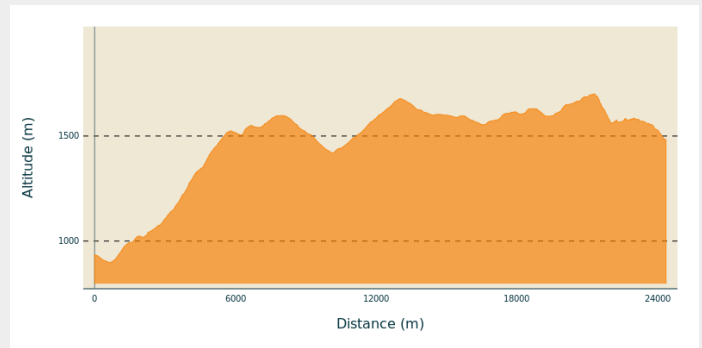
3. Prunières

4. Saint-Apollinaire

5. Savines-le-Lac

6. Réallon

## Altimetric profile



Min elevation 898 m Max elevation 1701 m

1. Continue on the road to Clayer where the track begins, as far as Palier and then to Le Laus. From Le Laus, a stony then grassy path climbs between meadows, cutting across the bends in the road and passing through Freyssinet and Les Gontards.

- Possible variant via the Col de la Gardette > see corresponding stage.


2. At Les Gontards, take the track on the right following the GR50, which joins the GRP des Balcons de Serre-Ponçon and the Joubelle forest road before reaching the resort of Réallon.
3. Cross the car park to the left, past the tourist office, up to the snow line and past the restaurant and chalets. At the junction with the road, climb left and at the fork, climb left again. At the Chalet des Oucanes, head towards Vaucluse. Enjoy the view of the village of Réallon and its fort.
4. Follow the GR50 and snowshoe route. At "La Posette", continue towards Vaucluse and at the 2nd "Posette" sign, turn right and stay on the GR. Here, there is a pleasant picnic spot with a spring.
5. At Vaucluse (a charming hamlet), climb up towards the rocky peak (Aigue Noire) and at the "Vaucluse" sign, go right towards La Pourrachière and the GR50. Continue along the track to La Pourrachière via the GR50.
6. At the 1701m mark, take the GR path on the left towards Les Gourniers, go around the ford and continue to Les Tomelles.
7. Continue on the road leading to Les Gourniers.

# On your path...



 "Piolit-Pic de Chabrières" Natura 2000 site (A)

 Pasque flower (C)

 The Golden eagle (B)

 Turk's cap lily (D)

# All useful information

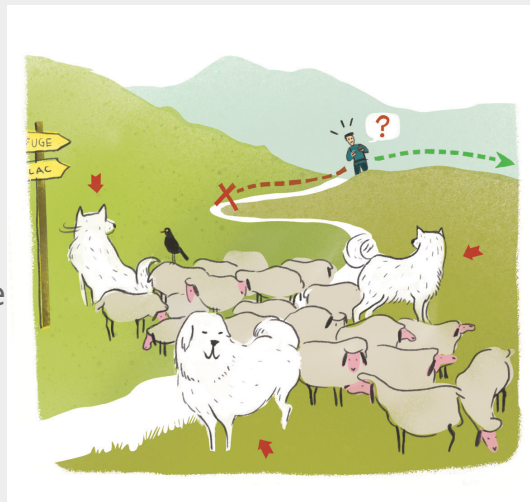
## Herd protection dogs

In mountain pastures, protection dogs are there to protect the herds from predators (wolves, etc.).

When I hike I adapt my behavior by going around the herd and pausing for the dog to identify me.

Find out more about the actions to adopt with the article "[Protection dogs: a context and actions to adopt](#)".

Tell us about your meeting by answering this [survey](#).



## Advices

**Hébergements partenaires** (comité tourisme équestre 05) :

- Gîte des 3 cols : [gitedes3cols.fr](http://gitedes3cols.fr)

## Gear

Equip yourself with an IGN Top 25 map and the digital route;  
Well-trained horses (gradients, variable terrain, duration, changing climate);  
Inquire before taking a shortcut;  
Doable from mid-May to mid-October.

## How to come ?

Transports

From **Gap** :

Zou Network! : Line 69 / Frequency : Every 4h  
Line 530 / Frequency twice a day

From **Embrun**:

Zou! network. : Line 69 / Frequency : Every 4 hours  
More info: <https://zou.maregionsud.fr>

SNCF : TER  
More info: <https://www.sncf-connect.com>

## Access

Follow the N94 from Gap or Embrun towards Montgardin before heading towards the Hautes-Alpes equestrian centre.

## Information desks

### Tourist office Charges

Grand rue, 05230 Charges

[charges@serreponcon-tourisme.com](mailto:charges@serreponcon-tourisme.com)

Tel : 0492506425

<https://www.serreponcon.com>



## Source



CDTE des Hautes-Alpes

<https://cdte05.ffe.com>

# On your path...

---

## "Piolit-Pic de Chabrières" Natura 2000 site (A)

(Le Piolit 2664m, les aiguilles de Chabrières 2403m)  
These grasslands, scree slopes and forests are home to rare and protected species such as the Fox-tail Milkvetch and the *Potentilla delphinensis* (for plants), the Jersey Tiger, the Rock partridge, the Greater Horseshoe Bat, the White-clawed crayfish, the red frog and the golden eagle (for animals).

---



## The Golden eagle (B)

The Golden Eagle is a large bird of prey with a wingspan of up to 2.30 metres. It is a predator par excellence, armed with fearsome weapons: rapid flight adaptable to the most acrobatic situations and powerful, sharp talons. Its sharp eyesight, eight times sharper than a human's, lets it detect its prey: from marmots and young chamois to ptarmigan and hare. The Golden Eagle is also a keen scavenger, especially in winter when food is scarce.

Attribution : Cyril Coursier - PNE

---



## Pasque flower (C)

If all pasque flowers are identifiable by their thick but soft hairiness, unlike anemones, when they reach maturity they also have a characteristic head of scruffy hair, made up of numerous fluffy white seed heads that will get blown away by the wind. In this family, the pasque flower is the most glamorous and most beautiful. It has the advantage of flowering in spring and displays a remarkable purple-black corolla among the grass that has been faded by the winter.

Attribution : Thierry Maillot - PNE

---



## Turk's cap lily (D)

In the undergrowth at the beginning of the route, then in the meadows, it stands out with its long upright flowering stem. It is embellished by three to ten flowers that are a purple-pink and crimson and have long orange stamen. Admire them without smelling, as they are as beautiful as they are smelly!

Attribution : Mireille Coulon - PNE

---