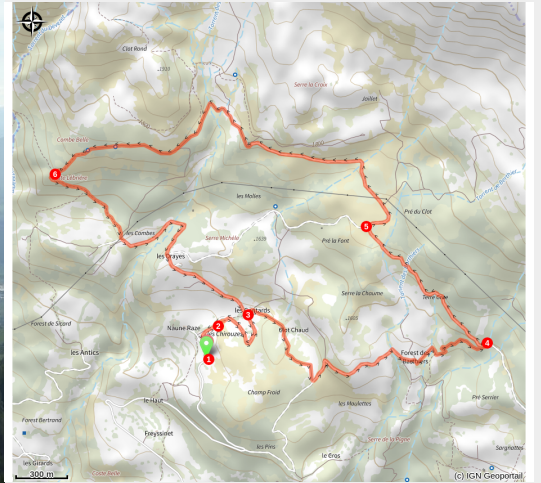


# The slopes of Charges

Charges



Vue sur le lac de Serre-Ponçon (JF. Arnaud - CDRP)



*A sunny balcony walk in a pastoral setting: sheepfolds and alpine huts, "forests", rock hutches, small high altitude fields...*

Set between the Ecrins massif and the Val d'Avance, this pleasant hike offers breathtaking panoramic views!

## Useful information

Practice : By walk

Duration : 3 h 30

Length : 9.5 km

Trek ascent : 375 m

Difficulty : Medium

Type : Loop

Themes : Panorama

# Trek

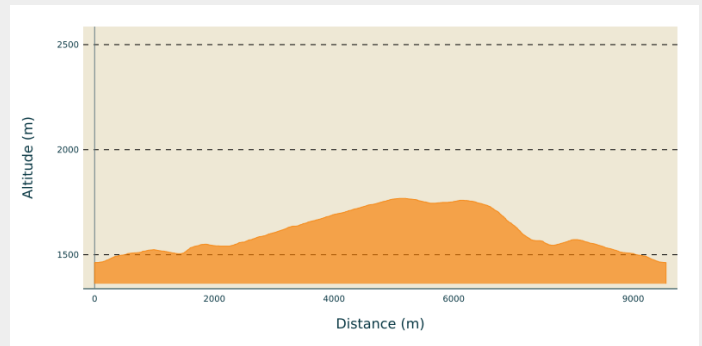
**Departure** : To the right, at the end of the tarmac road (7 km from Chorges)

**Arrival** : To the right, at the end of the tarmac road (7 km from Chorges)

**Markings** : — PR

**Cities** : 1. Chorges

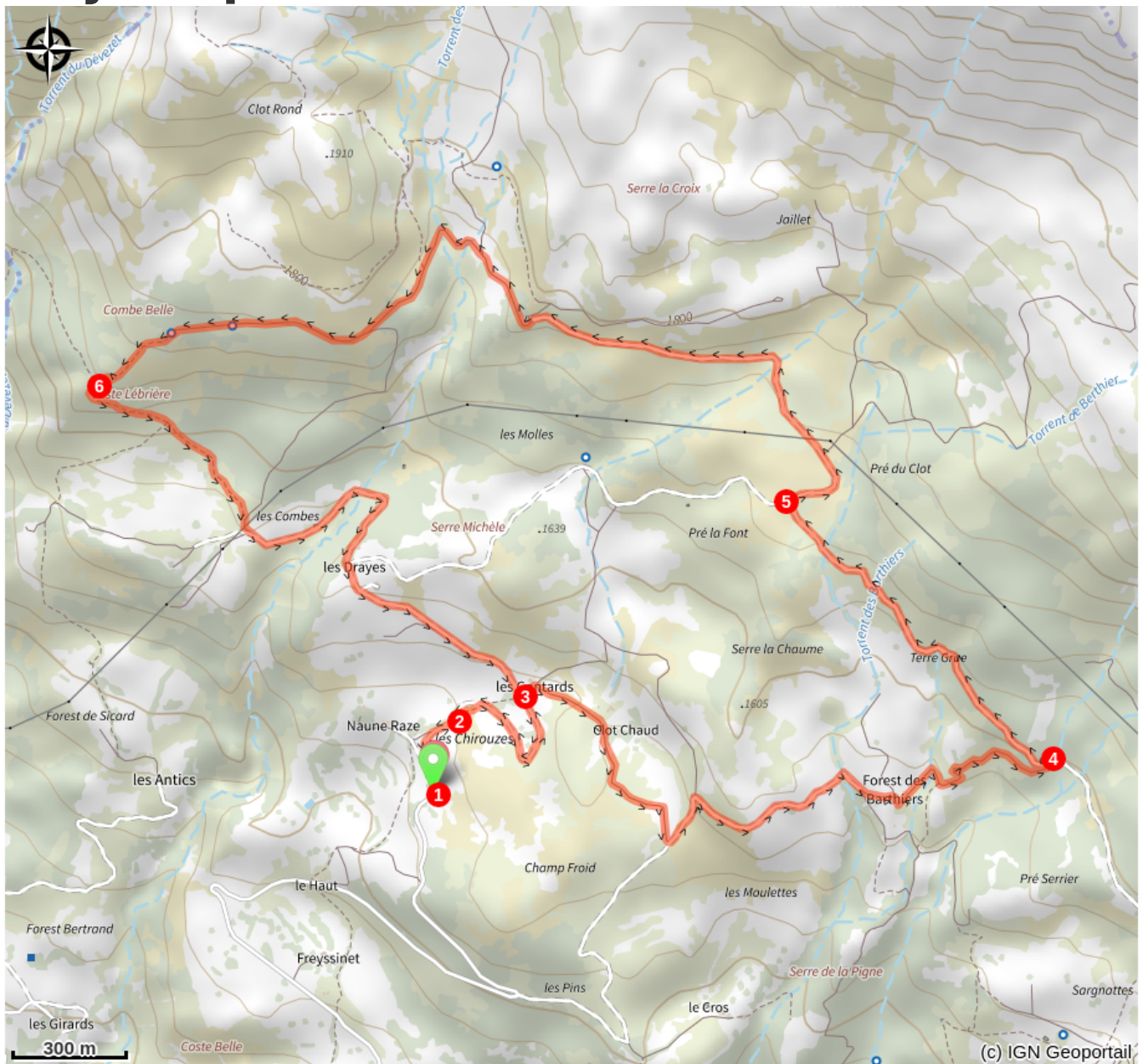
## Altimetric profile



Min elevation 1463 m Max elevation 1769 m

1. Follow the La Montagne shepherd's road for 200 m.
2. Turn right onto a path that cuts two hairpins in the road.
3. Head uphill towards the Gontards sheepfold. Turn right, cross a pass and descend into a cultivated area. Climb the track on the left, turn right, pass the serre du Corbeau, descend to the Forest des Berthiers and continue on the uphill track to the forest road.
4. Ascend to the crossroads with the Route de la Montagne at the place known as "Jardin des Gardes". Shorter option (2 hrs): descend to the left, take a left fork and head for Les Gontards.
5. Pass to the right of the metal gate. Leave the Col de la Gardette path and follow the track to a stone hut on the left in a paddock. Turn left into the paddock and walk down the path that runs alongside the road. At the bottom, cross a cattle assembly yard, cross the stream and then a torrent and climb a stony path. After a balcony walk (*the panorama extends as far as Mont Ventoux*), at the end of the path, descend to the left into the undergrowth, turn left then right to find a path that leads to a footpath.
6. Go down it on the left to a path. Head left towards the hut, cross the Réallons stream and climb up to the shepherd's road. Descend to the Gontards crossroads. Turn right at two bends in the road to reach the car park.

# On your path...



 "Piolit-Pic de Chabrières" Natura 2000 site (A)

# All useful information

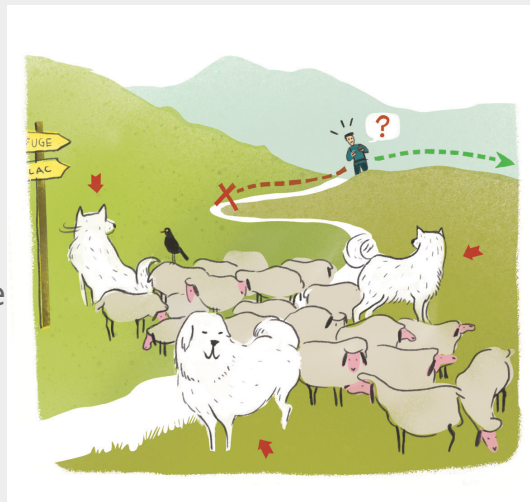
## **i** Herd protection dogs

In mountain pastures, protection dogs are there to protect the herds from predators (wolves, etc.).

When I hike I adapt my behavior by going around the herd and pausing for the dog to identify me.

Find out more about the actions to adopt with the article "[Protection dogs: a context and actions to adopt](#)".

Tell us about your meeting by answering this [survey](#).



## **!** Advices

Zone pastorale : bien refermer les barrières ; randonnée à éviter pendant les heures chaudes de la journée

## How to come ?

### Access

Naune Raze, 25 km east of Gap on the N94, the D69 and then the road to La Montagne

### Advised parking

To the right, at the end of the tarmac road (7 km from Chorges)

## Information desks

### Tourist office Charges

Grand rue, 05230 Charges

charges@serreponcon-tourisme.com

Tel : 0492506425

<https://www.serreponcon.com>



## Source



CDRP des Hautes-Alpes

<https://hautes-alpes.ffrandonnee.fr>

# On your path...

---

## "Piolit-Pic de Chabrières" Natura 2000 site (A)

(Le Piolit 2664m, les aiguilles de Chabrières 2403m)

These grasslands, scree slopes and forests are home to rare and protected species such as the Fox-tail Milkvetch and the *Potentilla delphinensis* (for plants), the Jersey Tiger, the Rock partridge, the Greater Horseshoe Bat, the White-clawed crayfish, the red frog and the golden eagle (for animals).