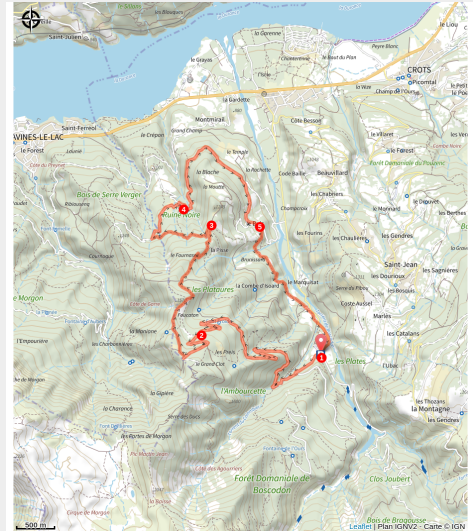


# Combe de l'Izoard loop

Embrunais - Crots



Vue sur le lac (florimont.tilliere)



*A route for the more sporty, offering a variety of difficulties in an exceptional forest.*

This route takes in the enchanting Boscodon forest and its magnificent abbey. Hamlets boasting traditional architecture full of charm sometimes appear at the bend in the path, adding to the interest of this loop.

## Useful information

---

Practice : Mountain bike

---

Duration : 3 h

---

Length : 14.7 km

---

Trek ascent : 668 m

---

Difficulty : Medium

---

Type : Loop

---

Themes : Flora, History and architecture

# Trek

**Departure** : Boscodon Abbey, Crots

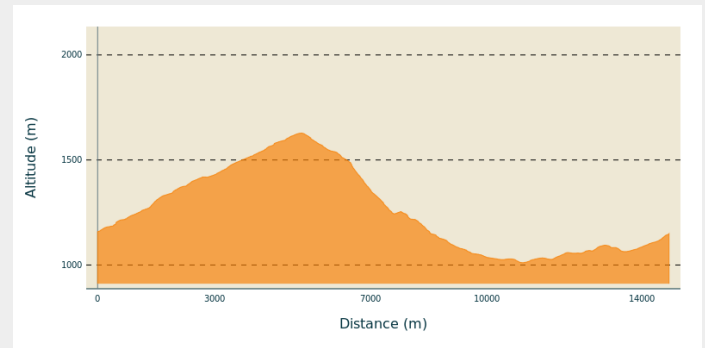
**Arrival** : Boscodon Abbey, Crots

**Markings** : 🚲 VTT

**Cities** : 1. Crots

2. Savines-le-Lac

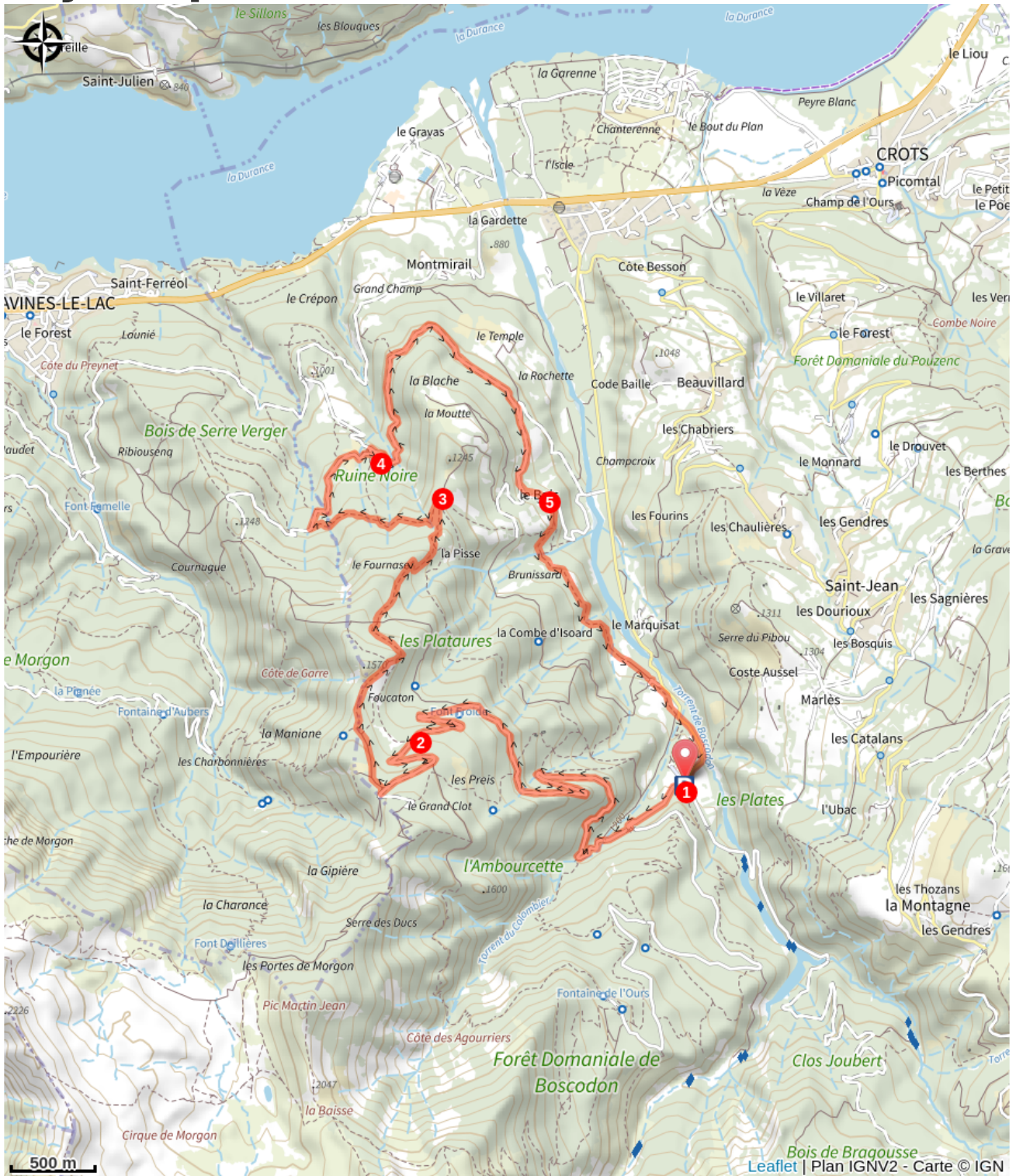
## Altimetric profile



Min elevation 1012 m Max elevation 1629 m

1. From the Boscodon Abbey car park, take the road up towards the Grand Clot car park. This turns into a track shortly after the hairpin bend 200m above.
2. After several kilometres on a hairpin track, take a path to the right that heads off into the Larch trees. Head down through the trees and turn right at the first crossroads in a clearing to follow a small grassy path. The descent becomes narrower and crosses a mountain pasture with an unobstructed view. Turn right as you return to the shade of the trees. Turn left after a slightly steeper and more technical section. Initially the descent takes a wide, very stony path and then becomes narrower, winding through pine trees.
3. Turn left through the pines to take an uphill section for a few metres before a flat area, on a balcony overlooking the lake. A new descent then precedes a short steep section, before the descent resumes. Be especially vigilant on a short, steep and stony section. Crossing a stream embedded in the rock means you have to get off and push your bike. Shortly afterwards, join a wide path and follow the signs for Clot Charron. Turn right onto a wide footpath.
4. Join a track and turn right towards Boscodon. Follow the track, then turn right after a downhill section. Go through the hamlet of Le Bois, then turn left at the end of the hamlet, then left again 50m later to continue along a small wooded road.
5. Turn right a little further on to cross a new hamlet and pass behind the chapel, then take a small path that passes the hamlet's traditional communal oven. Turn left straight afterwards. After a short descent and climb, turn left at the intersection. An enjoyable descent along a narrow path and a short uphill section lead to a farm. Take a small path to the right just before you reach the road, then take the road at the bridge. Follow the road up to Boscodon Abbey.

# On your path...



# All useful information

## How to come ?

Transports

Transports en commun : [ccserreponcon.com](https://ccserreponcon.com)

Access

Follow the N94 from Charges or Embrun, then take the D568 at Crots to reach Boscodon Abbey.

Advised parking

Boscodon Abbey car park

## Information desks

### Tourist office Crots

Place des Ballerins, 05200 Crots

Tel : 0492431305

<https://www.serreponcon-tourisme.com/>

## Source



Serre-Ponçon

<https://www.serreponcon.com>