

# Bois Seignièrès

Chorges



(florimont.tilliere)



*A very accessible hike in a setting that is by turns rural and wooded.*

Enjoy a wooded, shady route that can offer some magnificent views of the surrounding peaks. The lapping waters brighten up the end of this journey, which follows a small stream.

## Useful information

---

Practice : By walk

---

Duration : 2 h 30

---

Length : 6.3 km

---

Trek ascent : 316 m

---

Difficulty : Easy

---

Type : Loop

---

Themes : Fauna, Flora

---

Accessibility : Family

---

# Trek

**Departure** : Les Chaussins, Charges

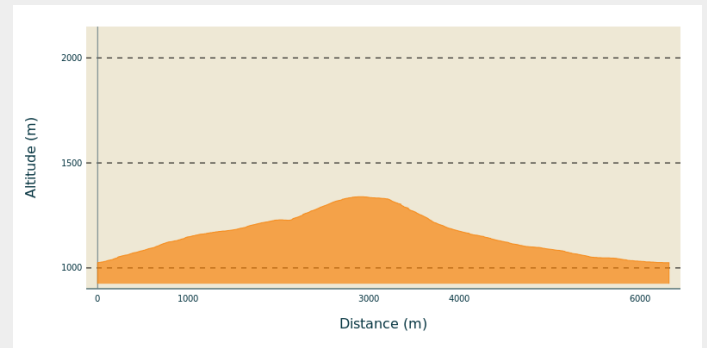
**Arrival** : Les Chaussins, Charges

**Markings** : — PR

**Cities** : 1. Charges

2. Montgardin

## Altimetric profile



Min elevation 1026 m Max elevation 1340 m

1) Take a path that rises to the right of the road towards Champ du Comte, following the yellow markings. Turn right at the first junction and follow the track. Continue along the track, which levels out at the next junction. After a few hundred metres on the track, take a steeper path on the left towards Bois Seignères.

2) After a fairly steep ascent, turn left onto a flat track that runs alongside a clearing. Turn left at the Arrouet sign where several tracks cross towards Champ du Comte. Pass the Champ du Comte hut and continue along the track. Turn left after 50m onto a small path. Go downhill, then turn left onto a wider path. The path narrows and then runs alongside a stream, which you may have to cross depending on the layout of the fences.

4) Turn left as you return to the road, then turn left onto the road at the entrance to the hamlet of Fein. Take a farm track on the right 50m after the hamlet, then go straight ahead at the intersection and straight ahead again on a small path that joins a track. Cross the street. Join the road and follow it downhill

.

# On your path...



 The Roe Deer (A)

# All useful information

## **Advices**

Il n'y a pas de sources ou de fontaines sur le parcours. Pensez à prendre suffisamment d'eau.

## **How to come ?**

### Transports

Public transport : [ccserreponcon.com](https://www.ccserreponcon.com)

### Access

Follow the N94 to Chorges, then take the D203 towards Les Chaussins.

### Advised parking

Park at the side of the road 200m after the hamlet of Les Chaussins

## **Accessibility**

---

Family

## **Information desks**

### **Tourist office Chorges**

Grand rue, 05230 Chorges

chorges@serreponcon-tourisme.com

Tel : 0492506425

<https://www.serreponcon.com>



## **Source**

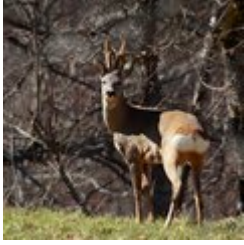


Serre-Ponçon

<https://www.serreponcon.com>

# On your path...

---



## The Roe Deer (A)

Elegant, agile and fast, the roe deer is very discreet but leaves the imprint of its frail hooves on the snow or mud up to the alpine level. They can also be spotted by their loud "voice", emitting a powerful bark when disturbed. In the semi-darkness, their mirror, that white spot under the tail in the shape of a heart for the female and a bean for the male, can give them away. When it starts out on life, the fawn is covered in white spots that camouflage it. This "bambi" often lies on the grass. If you find one, remember not to touch it: it hasn't been abandoned.

Attribution : Albert Christophe - PNE