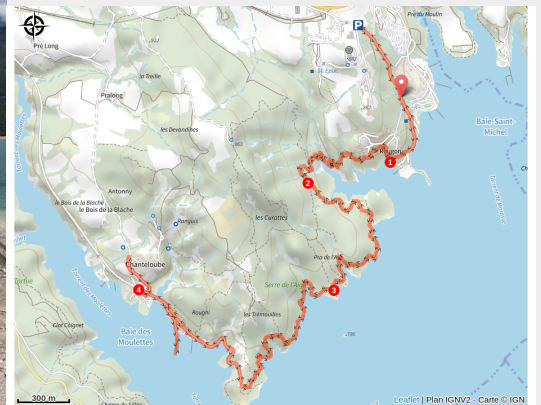


# Sentier du bord de Lac - Lakeshore path

Chorges



Au bord du Lac (Amélie Vallier)



*This wild trail along a lakeshore path offers new perspectives. The showstopper is at the Chanteloube viaduct.*

From the Baie St-Michel, follow the shores of the Lac de Serre-Ponçon for several kilometres. A succession of rises takes you to numerous combes with their characteristic black earth. Relish the shade as you pass through forested areas. Then, in no time at all, you are back near the lake, admiring the view. At the end of the trail, discover the famous Chanteloube viaduct, which is totally submerged in the summer season.

## Useful information

Practice : By walk

Duration : 4 h

Length : 13.6 km

Trek ascent : 417 m

Difficulty : Easy

Type : Return trip

Themes : Fauna, Flora, Lake and glacier

Accessibility : Family

# Trek

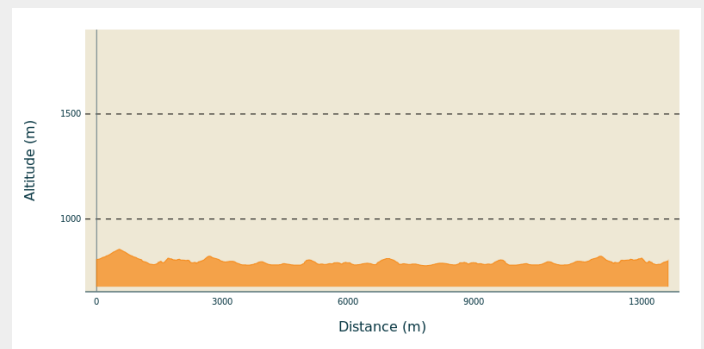
**Departure** : Baie St Michel, Chorges

**Arrival** : Baie St Michel, Chorges

**Markings** : — PR

**Cities** : 1. Chorges

## Altimetric profile

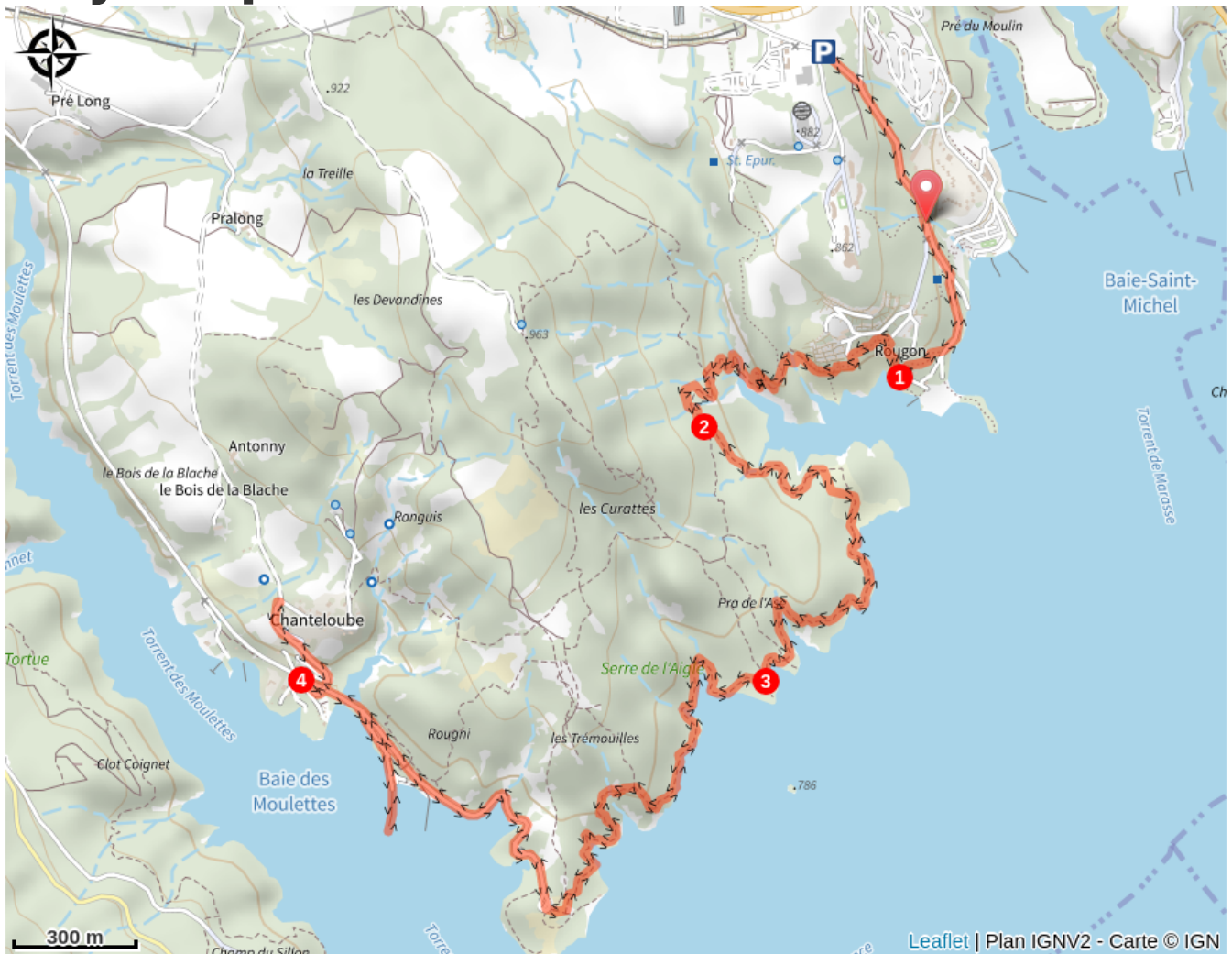


Min elevation 779 m Max elevation 857 m

From the car park, head down the road towards Chanteloube via Serre de l'Aigle. At « la plage des pommiers » take the track on the right at the gate.

1. After a few metres, take the path leading uphill to the right, towards Chanteloube.
2. At the next intersection (« sous les Curattes ») head towards the beach of Trémouilles and Chanteloube via the lakeshore ("Plage de Trémouilles", "Chanteloube par littoral").
3. Then, carry on in this direction until you come to « Pra de l'As » and turn left. You emerge from the forest and when you come to the beach take the path on the right. At the next intersection, turn left. When you come to the beach, go past the car park and follow the road to the Pont de Chanteloube, for a there-and-back detour. After going past the viaduct, carry on along the path to reach the road.
4. After a few metres, go under the bridge and join the road left towards the Chapelle St-Jacques a few hundred metres further up.

# On your path...



Panorama of the Baie Saint-Michel  
(A)



The Common Blue (C)



Downy oak (E)



Grey heron (G)



Gullied black earth (B)



Burnet moth (D)



Western green lizard (F)



Chapel of St-Jacques (H)

# All useful information

## **Advices**

This route leads through areas exposed to the sun: hats are recommended. Remember that you are sharing the path with other users.

## **How to come ?**

### Transports

Public transport : [www.pacamobilite.fr](http://www.pacamobilite.fr)  
Consider car-sharing : [www.blablacar.fr](http://www.blablacar.fr)

### Access

From Chorges or Embrun along the N94, head to the Baie St-Michel and turn right to reach the memorial.

### Advised parking

Parking space is available close to the memorial

## **Accessibility**

---

Family

## **Information desks**

### **Tourist office Chorges**

Grand rue, 05230 Chorges

[chorges@serreponcon-tourisme.com](mailto:chorges@serreponcon-tourisme.com)

Tel : 0492506425

<https://www.serreponcon.com>



## Source



Serre-Ponçon

<https://www.serreponcon.com>



SMADESEP

<http://www.smaadeseep.com>

## On your path...

---

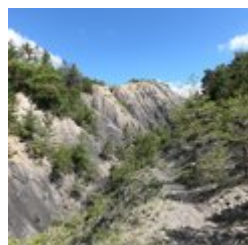


### Panorama of the Baie Saint-Michel (A)

This area, which has been provided with picnic amenities, offers the most picturesque panorama over the Lac de Serre-Ponçon. In fact, the lake is 2 kilometres wide at this point, and in front of you are the Chapelle Saint Michel and the Pic Morgon, an iconic view of the lake. On your left, to the east, you can see Savines-le-Lac and its bridge. On the right, you can see the secret île de la Tortue.

Attribution : Amélie Vallier

---

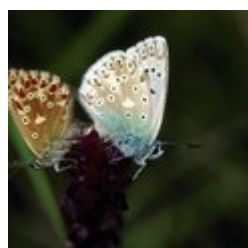


### Gullied black earth (B)

Prized by mountain bikers, Terres Noires, or black earth, is formed from rocks which erode easily. The flows caused by precipitations shape and sculpt these friable marls. In the Alpine region, numerous examples can be seen, in particular on slopes, which vary in gradient depending on the area, which increases the speed of the water flow.

Attribution : Amélie Vallier

---



### The Common Blue (C)

In this small butterfly, the male's upper wings are dark grey, somewhat bluer at the base of the wings, while the female is brown. It is most common at higher altitudes, in July and August, in grasslands and meadows. The Arctic Blue is a species of northern regions (Scandinavia, Greenland, Siberia, North America) which, in more temperate parts, lives only in the mountains.

•

Attribution : Jean-Marie Gourreau - PNE





### Burnet moth (D)

This is a medium-sized moth (25 - 35 mm wingspan), often brightly coloured: the inner wing has a maximum of six spots. This burnet moth is found on the edges of calcareous meadows, steppe-like slopes, dry bushes and clearings in dry forests. This remarkable species is a sign of the quality of the habitats but it is not at risk so does not appear on the list of threatened species.

Attribution : Pascal Saulay - PNE



### Downy oak (E)

The oak has a dark grey bark which is deeply fissured. Its lobed leaves, downy on their undersides, remain dried out on the tree until the spring. The fruits, called acorns, ripen in the autumn. The oak can grow at up to 1,500 metres above sea level, on well exposed slopes. Also called the white oak, the downy oak is well known for hosting truffles among its roots. This fungus develops 30 to 40 cm underground, and the difficulty in finding it makes it a culinary delicacy.

Attribution : Christian Baisset - PNE



### Western green lizard (F)

This lizard can be spotted from April through to late September. The species is in hibernation for the rest of the year. It hunts in areas with dense vegetation and feeds primarily on insects and invertebrates. It exhibits sexual dimorphism, that is to say, during the breeding season only, the males have bright blue colouring on the throat and sides of the head. Mating takes place around May. The males engage in fights, in which they occasionally lose their tails.

Attribution : Mireille Coulon - PNE



### Grey heron (G)

This is a tall bird (85 to 102 cm). Its white head is adorned with two large black eyebrows. Its back and wings are ash grey, hence its name. Its legs and beak are yellowish in colour. It uses its long, powerful beak to catch large prey (fish, amphibians etc.). In flight, its neck is folded back forming an «S». This species is wholly protected by regulations.

Attribution : Pascal Saulay - PNE



## Chapel of St-Jacques (H)

Located in Chanteloube, this church is through to date back to 1510. It has retained all its authenticity, with its exposed stone. It is dedicated to Saint James, one of the 12 apostles and one of the first martyrs of the Catholic church. Its recent restoration has made it possible to hold the traditional celebrations there, in honour of Saint James. The purpose of each one is to commemorate a historical event connected with the saint. When he died, he was taken to Compostella in Spain, hence the name of the pilgrim's Way of Saint James to Santiago de Compostella, a religious route passing along the shores of the Serre-Ponçon lake.

Attribution : Amélie Vallier