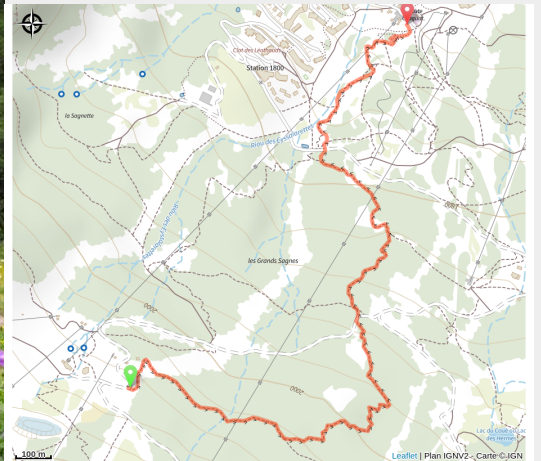


Descent track no. 2: La Draille

Vallouise - Puy-Saint-Vincent



Draille (Thibaut Blais)



Technical, short-distance track.

Link trail between the top of the Les Prés chairlift and the 1600 resort. After a short distance pedalling, a fast section with a series of banked bends, jumps and a step-up.

Useful information

Practice : Mountain bike

Duration : 0 min

Length : 2.8 km

Difficulty : Easy

Type : Descent

Themes : Flora, Pastoralism

Trek

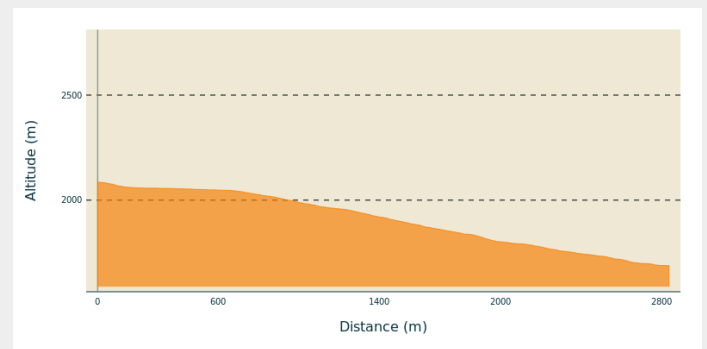
Departure : Top of the Les Prés chairlift, Puy Saint Vincent

Arrival : Puy Saint Vincent 1600 resort

Markings : 🚲 VTT

Cities : 1. Puy-Saint-Vincent

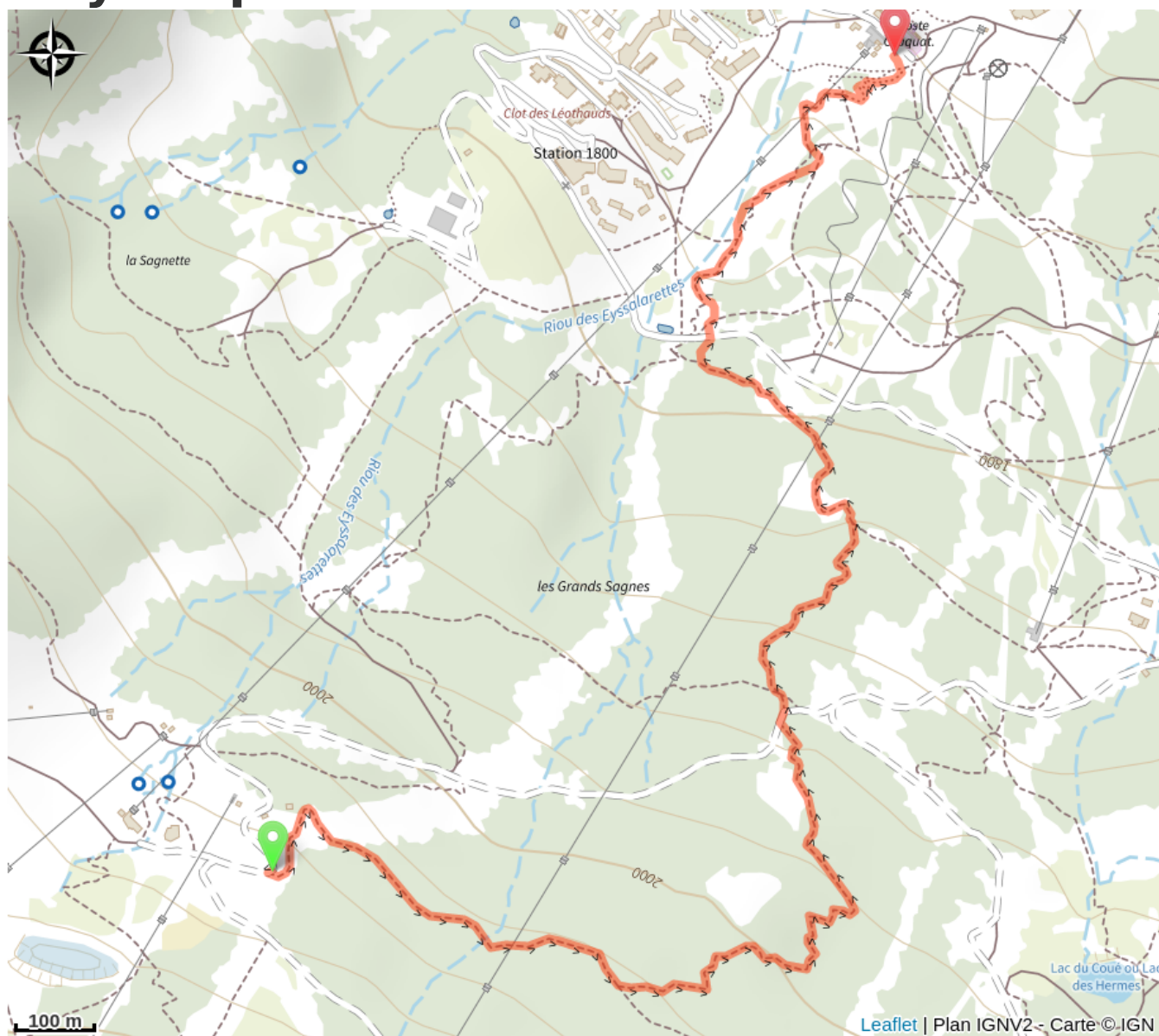
Altimetric profile




Min elevation 1689 m Max elevation 2087 m

Pour arriver au départ du circuit, prendre le télésiège de la Crête des Bans et rejoindre le départ du télésiège du Rocher Noir par la route.

On your path...



 The architecture of La Voile in Puy-Saint-Vincent 1600 (A)

All useful information

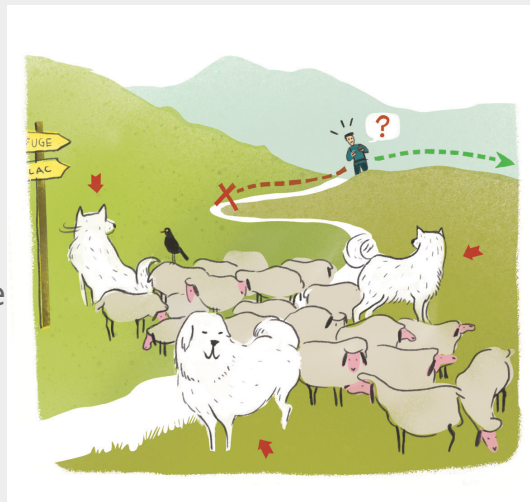
i Herd protection dogs

In mountain pastures, protection dogs are there to protect the herds from predators (wolves, etc.).

When I hike I adapt my behavior by going around the herd and pausing for the dog to identify me.

Find out more about the actions to adopt with the article "[Protection dogs: a context and actions to adopt](#)".

Tell us about your meeting by answering this [survey](#).



! Advices

Take the Les Prés chairlift to the 1400 resort to reach the starting point of the descent (there is a charge)

Les Prés chairlift open from 7 July to 30 August, 9.30am to 16.45pm (subject to change)

Safety: Helmet obligatory; back protector, knee pads and gloves are strongly recommended.

Regulations: Mountain biking in the Bike Park is regulated by Municipal Order no. 2019.17

Rescue services contact details: Secours Montagne (Mountain Rescue): +33 (0)4 92 22 22 22 or 112 and give the name and number of the marker and the nature of the injuries

Take your litter home

Do not take shortcuts across pastureland

How to come ?

Transports

Public transport >> www.pacamobilite.fr

Consider car-sharing >> www.blablacar.fr

For more information, ask at the Tourist Information Office nearest to the trail starting point >> www.paysdesecrins.com

Access

8.5 km from L'Argentière-la-Bessée, take the D994E and then the D4.

Advised parking

Car park at the Puy Saint-Vincent 1400 resort

Environmental sensitive areas

Along your trek, you will go through sensitive areas related to the presence of a specific species or environment. In these areas, an appropriate behaviour allows to contribute to their preservation. For detailed information, specific forms are accessible for each area.

Golden eagle

Sensitivity period: January, February, March, April, May, June, July, August

Contact: Parc National des Écrins
Julien Charron
julien.charron@ecrins-parcnational.fr

Nidification de l'Aigle royal

Les pratiques qui peuvent avoir une interaction avec l'Aigle royal en période de nidification sont principalement le vol libre et les pratiques verticales ou en falaise, comme l'escalade ou l'alpinisme. Merci d'éviter cette zone et de privilégier un survol de la zone à une distance de survol de 300m sol soit à une altitude minimale de 2600m.

Information desks

Vallouise Park house

vallouise@ecrins-parcnational.fr
Tel : 04 92 23 58 08
<http://www.ecrins-parcnational.fr/>



Bureau d'Information Touristique de Puy Saint Vincent 1400

Les Alberts, 05290 Puy Saint Vincent
1400 m

contact@paysdesecrins.com
Tel : +33(0)4 92 23 35 80
<https://www.paysdesecrins.com/>



Source



Pays des Ecrins

<https://www.paysdesecrins.com>

On your path...



The architecture of La Voile in Puy-Saint-Vincent 1600 (A)

The construction of this large building complex, the highest part of which is known as « La Voile » (the sail), was started in 1973 by a team of investors responsible for developing the 1600 ski resort. Designed by the Grenoble-based architect, Michel Ludmer of the Les 3A firm of architects, this tiered construction hugs the slopes with its silhouette, its soaring design structured around a mast, like the sail of a yacht sailing in a sea of snow. La Voile was inspired by iconic buildings in other tourist resorts, like the « Paquebot des Neiges » (the snow liner) in La Plagne and the « La Grande Pyramide » (great pyramid) in La Grande-Motte. Although still misunderstood, this architecture which presents numerous advantages (like restricting the use of space) might well merit a « Twentieth Century Heritage » label.

Attribution : Jan Novak