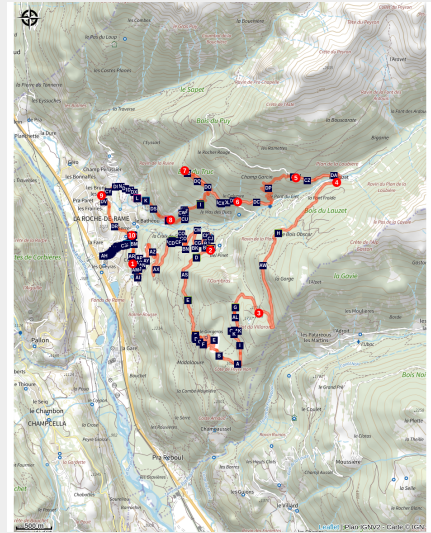


Le Bois du Truc circuit (no. 12)

La Roche-de-Rame



single fond de Pelvoux (rogiervanrijn)



A pleasant route along a stony uphill track and a relatively technical downhill path.

Circuit running above La Roche-de-Rame, along almost its entire length offering a panoramic view over the Durance valley and the municipality. As you ascend, Mont Pelvoux comes into view in the distance. The ascent is relatively straightforward along a wide track, although the descent is much more technical with a number of narrow single-tracks.

Useful information

Practice : Mountain bike

Duration : 3 h

Length : 22.0 km

Difficulty : Hard

Type : Loop

Themes : Fauna, Flora, History and architecture

Trek

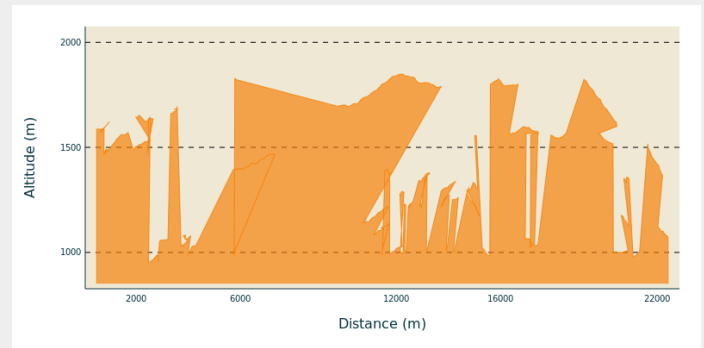
Departure : La Roche-de-Rame mayor's office ("Mairie")

Arrival : La Roche-de-Rame mayor's office ("Mairie")

Markings : ➤ VTT

Cities : 1. La Roche-de-Rame

Altimetric profile

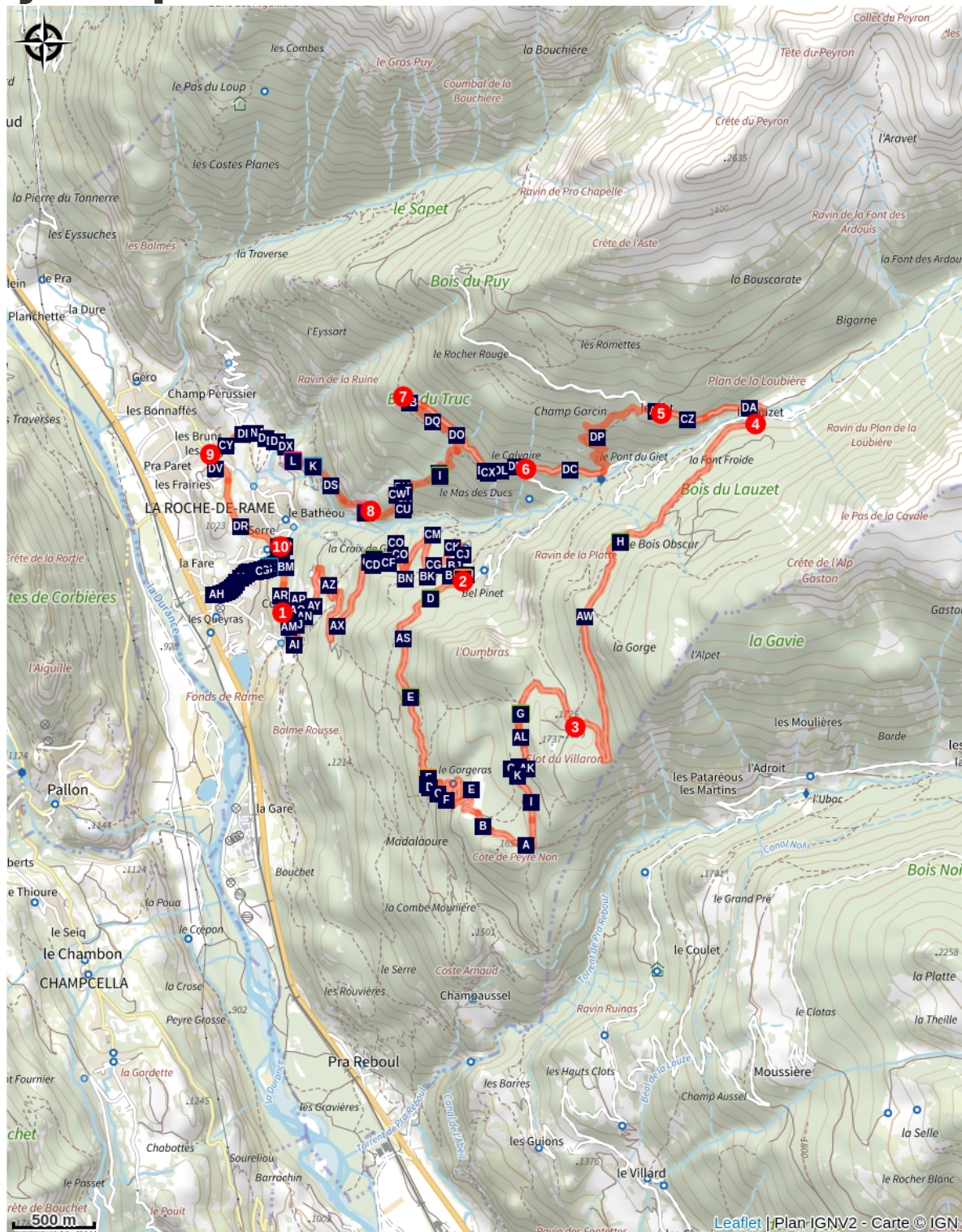














Min elevation 0 m Max elevation 0 m

The circuit starts not far from the La Roche-de-Rame mayor's office ("Mairie") near the Bouchouse mountain stream. First, follow its left-hand bank, going upstream. 430 metres further up, cross the mountain stream and carry on along the right-hand bank. At the crossroads, turn right to cross the mountain stream again and carry on uphill towards Bel Pinet.

1. Turn left towards Le Lauzet, winding uphill along a stony track
2. When you reach Bel Pinet, at 1,400 m altitude, take the track on the left to the Calvary and the Bois du Truc
3. 150 metres past the Calvary, at 1,561 m altitude, turn left to the Bois du Truc up a final short ascent
4. 180 metres further on, at a set of gate posts, turn left onto the path below the track, to tackle the single-track descent (Caution! Quite steep downhill section to reach the path, and technical stretches on the path)
5. At the Bois du Truc, at 1,510 m altitude, carry on down the single-track section towards Le Bathéou and La Roche-de-Rame (exercise caution on the numerous technical stretches)
6. At Le Mas des Ducs, at 1,290 m altitude, carry on straight ahead towards Bathéou and La Roche-de-Rame
7. Continue straight ahead along the track above Le Bathéou, heading towards Les Gillis and the dwellings
8. At Les Gillis, turn left onto the D338. Then, 60 metres further on, turn left again to the village centre
9. Turn right and follow the Bouchouse downstream on the right-hand bank. Then, after 170 metres cross the mountain stream, which brings you back to the mayor's office and your starting point

On your path...



- | | |
|---|---|
|  Bouchouse mountain stream (A) |  The narrow-leaved lavender (B) |
|  Bel Pinet (C) |  Pine forest (D) |
|  The aspen wood (E) |  The Pink Marble of Combe Mounière (F) |
|  The spotted nutcracker (G) |  The Norway spruce (H) |
|  The bearberry (I) |  La Roche-de-Rame (J) |
|  The Serre-Duc canal (K) |  View over the Durance valley (L) |

All useful information

Advices

Rescue services contact details: Secours Montagne(Mountain Rescue): +33 (0)4 92 22 22 22 or 112

Take your litter home

Do not take shortcuts across pastureland

How to come ?

Transports

Public transport >> www.pacamobilite.fr

Consider car-sharing >> www.blablacar.fr

For more information, ask at the Tourist Information Office nearest to the trail starting point >> www.paysdesecrins.com

Access

6.7 km from L'Argentière-La Bessée, take the N94.

Advised parking

mayor's office ("Mairie") car park, La Roche-de-Rame

Environmental sensitive areas

Along your trek, you will go through sensitive areas related to the presence of a specific species or environment. In these areas, an appropriate behaviour allows to contribute to their preservation. For detailed information, specific forms are accessible for each area.

Short-toed snake eagle

Sensitivity period: March, April, May, June, July, August, September

Contact: Parc National des Écrins Julien Charron julien.charron@ecrins-parcnational.fr

Nidification du Circaète-Jean-le-Blanc

Les pratiques qui peuvent avoir une interaction avec le Circaète-Jean-le-Blanc en période de nidification sont principalement les pratiques aériennes comme le vol libre ou le vol motorisé.

Merci d'essayer d'éviter la zone ou de rester à une distance minimale de 300m sol quand vous la survolez soit 1700m d'altitude !

Information desks

Vallouise Park house

vallouise@ecrins-parcnational.fr
Tel : 04 92 23 58 08
<http://www.ecrins-parcnational.fr/>



Bureau d'Information Touristique de L'Argentière-La Bessée

23 Avenue de la République, 05120
L'Argentière-La Bessée
contact@paysdesecrins.com
Tel : +33(0)4 92 23 03 11
<https://www.paysdesecrins.com/>



Source



Pays des Ecrins

<https://www.paysdesecrins.com>

On your path...



Bouchouse mountain stream (A)

The Bouchouse mountain stream is fed by the Le Pansier and La Pisse mountain streams 1,900 metres above sea level. It crosses the municipality of La Roche-de-Rame, supplying it with water. This mountain stream then flows into the Durance below the municipality.

Attribution : Office de tourisme du Pays des Écrins



The narrow-leaved lavender (B)

The narrow-leaved lavender has greenish-grey leaves and violet flowers. It grows in sunny areas, a reminder that the Pays de Écrins is in the Southern Alps after all! Not to be confused with the lavandin, this plant naturally grows on rocky slopes in the mountains of the Midi. The word «lavender» is thought to come from the Latin "to wash". This etymology suggests that lavender was used at a very early date to perfume washing.

Attribution : Bernard Nicollet - Parc national des Écrins



Bel Pinet (C)

Bel Pinet stands at 1,400 metres above sea level in the Bouchouse valley, in the municipality of La Roche-de-Rame. Bel Pinet, or Bel-Pinet, designates the slopes under the rocky cliffs of the Oumbras. It was once irrigated by the Bel Pinet Canal, which suggests that it used to be cultivated and would therefore have been less wooded. The term "Pinet" simply means a place planted with pines (Pinus in Latin). So Bel Pinet means a beautiful place planted with pines, or a beautiful pine wood.

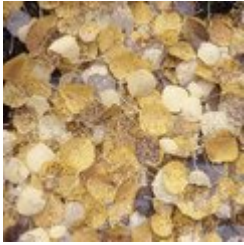
Attribution : Office de tourisme du Pays des Écrins



Pine forest (D)

The path runs through a forest of Scots pine, recognisable by its orangey trunk, especially at the top. This tree is very drought-resistant (it is very limey soil here) and can also withstand low temperatures. It is therefore found in large numbers in the intra-alpine valleys.

Attribution : Parc national des Écrins



❁ The aspen wood (E)

Here, a wood of aspen trees, with smooth greenish trunks and round, crenulated leaves, adopt magnificent autumn colours. The petiole («tail») of aspen leaves is flat and twisted and can therefore be caught by the slightest breath of air. This has the effect of making the foliage tremble, hence its French name bois de tremble!

Attribution : Daniel Roche - Parc national des Écrins



🍊 The Pink Marble of Combe Mounière (F)

In the nineteenth century, there were four quarries in La Roche-de-Rame. They exploited deposits of metamorphosed limestone which was pink in colour. One of these, the Combe Mounière quarry, produced stone which was used in particular in the construction of the new Cathedral of Saint-Arnoux in Gap, between 1866 and 1904. When exposed to the elements, the surface of the limestone takes on a grey patina.

Attribution : Office de tourisme du Pays des Écrins



🇩🇪 The spotted nutcracker (G)

A harsh call sounds from the forest. A jay perhaps? No, a nutcracker, its cousin. With dark, white-spotted plumage, this bird's strong beak can break open hazelnuts (although not walnuts as suggested by its name in French, cassenoix (walnut breaker)) and in particular it can dissect Swiss pine cones in order to reach the pine nuts inside. It inhabits high forests. It buries Swiss pine nuts in the ground to store up food for the winter. When winter comes, it will find the pine nuts again even under a thick layer of snow. Those it forgets will germinate.

Attribution : Damien Combrisson - Parc national des Écrins



❁ The Norway spruce (H)

Its slender conical silhouette can rise to a height of 40 to 50 metres. It is the tallest of the indigenous softwood trees. Its white wood has a scent of resin. It is widely used for wooden framework in construction, and also to make musical instruments because it is strong and easy to work. Its long, pointed cones hang downwards, unlike fir cones which are upright. It can live for between 300 and 400 years.

Attribution : Nicollet Bernard - Parc national des Écrins



✿ The bearberry (I)

The bearberry is a small bush which grows no taller than 20 centimetres. Its small, glossy, evergreen leaves are reminiscent of those of the lingonberry (*Vaccinium vitis idaea*) but they are not as thick and, above all, its fruits are much less appetising, although they are edible. It will depend on your tastes!

Attribution : Nicollet Bernard - Parc national des Écrins



🏠 La Roche-de-Rame (J)

A magnificent view over the municipality of La Roche-de-Rame which lies entirely on the left-hand bank of the Durance. Like L'Argentière-la-Bessée, its recent history has been profoundly marked by industry which saw rapid expansion in the early twentieth century. Well known for its natural stretch of water, a glacial lake, the hamlets of the municipality are dotted across the slopes. Higher up, two large valleys are carved into the massif, forming a fork with the Bouchouse and Queyras valleys.

Attribution : Office de tourisme du Pays des Écrins



💧 The Serre-Duc canal (K)

The district of Serre-Duc lies between Le Bathéoud and the rocky slopes. The Serre-Duc irrigation canal allowed the circulation of water. It is now abandoned but its course can still be made out among the pine trees and lavender. Its water intake was situated upstream of the Coumbal de Satan and the canal was used to irrigate the entire district.

Attribution : Office de tourisme Pays des Écrins



🏠 View over the Durance valley (L)

Protected from Atlantic influences by the Massif du Pelvoux, the high Durance valley has a very dry climate with wide seasonal temperature fluctuations. It has grasslands very similar to the steppes of Central Europe which are rare in France. It is part of the Natura 2000 “Steppique durancien et queyrassien” (Durance and Queras valley steppes) site.

Attribution : Office de tourisme Pays des Écrins
