

The L'Argentière-la-Bessée green route ("Voie Verte")

Parc national des Ecrins - L'Argentière-la-Bessée



Voie verte (Office de tourisme du Pays des Écrins)



Set off on an exploration of two iconic worlds in the municipality of L'Argentière-la-Bessée.

Ideal for the whole family, this very easy route takes you into the two worlds built in the past by L'Argentière-la-Bessée, and which continue to shape its history today. First, on the first part of the route you will discover the industrial history of L'Argentière-la-Bessée with its many now-historical sites as well as buildings still in use today. Then, along the second part of the route, the municipality's sports multiplex with its white water stadium which attracts crowds of people in the summer and stages annual competitions.

Useful information

Practice : By walk

Duration : 1 h

Length : 4.7 km

Trek ascent : 31 m

Difficulty : Very easy

Type : Return trip

Themes : History and architecture

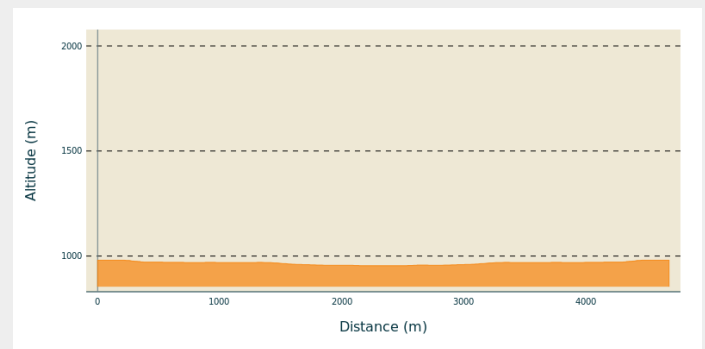
Accessibility : Family, Stroller

Departure : Tourist information office ("Bureau d'Information Touristique") in L'Argentière-la-Bessée

Arrival : Tourist information office ("Bureau d'Information Touristique") in L'Argentière-la-Bessée

Cities : 1. L'Argentière-la-Bessée

Altimetric profile



Min elevation 955 m Max elevation 981 m

The green route starts near the L'Argentière-la-Bessée information office ("Bureau d'Informations") and the public finance office, on the left-hand bank of the Durance, along a track laid out for pedestrians and mountain bikers. At the beginning of the trail, you can admire a nineteenth century vertical compressor, a historical tool of industry that is an immediate introduction to one of the themes you will encounter on the route.

1. Turn right and cross the pedestrian footbridge taking you to the right-hand bank of the Durance and the developed part of the town
2. Take the first left after the footbridge and continue straight ahead along a shared track. On your left, you can admire the municipal electricity system and, a few metres further on, the children's play area
3. At the end of the pedestrian track, continue straight ahead between two of the municipality's iconic historical industries. On their walls, you will also see information panels telling something of the industrial past of L'Argentière-La Bessée
4. After passing these historical buildings, head left and then right to join another pedestrian track following the right-hand bank of the Durance
5. Cross the pedestrian footbridge spanning the Fournel. You then leave the world of industry behind as you enter a world of sport with the presence of numerous sporting amenities, including the well-known white water stadium.
6. Go along the edge of the campsite on the banks of the Durance, until you come to the local road and a bridge, the Pont de Chancel
7. Turn back on yourself and follow the same route back to your starting point

On your path...





 The vertical compressor (A)


 The Péchiney factory (C)

 The Durance (E)

 The white water stadium (G)

 Louis Leprince-Ringuet and L'Argentière (B)

 Former industrial area of L'Argentière-la-Bessée (D)

 The Fournel (F)

All useful information

Advices

Rescue services contact details: Secours Montagne (Mountain Rescue): +33 (0)4 92 22 22 22 or 112

Take your litter home

How to come ?

Transports

Public transport >> www.pacamobilite.fr

Consider car-sharing >> www.blablacar.fr

For more information, ask at the Tourist Information Office nearest to the trail starting point.

Access

16 km from Briançon, take the N94.

Advised parking

Car park at the tourist information office ("Bureau d'Information Touristique") in L'Argentière-la-Bessée

Accessibility

Family  Stroller

Environmental sensitive areas

Along your trek, you will go through sensitive areas related to the presence of a specific species or environment. In these areas, an appropriate behaviour allows to contribute to their preservation. For detailed information, specific forms are accessible for each area.

Short-toed snake eagle

Sensitivity period: March, April, May, June, July, August, September

Contact: Parc National des Écrins
Julien Charron
julien.charron@ecrins-parcnational.fr

Nidification du Circaète-Jean-le-Blanc

Les pratiques qui peuvent avoir une interaction avec le Circaète-Jean-le-Blanc en période de nidification sont principalement les pratiques aériennes comme le vol libre ou le vol motorisé.

Merci d'essayer d'éviter la zone ou de rester à une distance minimale de 300m sol quand vous la survolez soit 1650m d'altitude !

Information desks

Vallouise Park house

vallouise@ecrins-parcnational.fr
Tel : 04 92 23 58 08
<http://www.ecrins-parcnational.fr/>



Bureau d'Information Touristique de L'Argentière-La Bessée

23 Avenue de la République, 05120
L'Argentière-La Bessée
contact@paysdesecrins.com
Tel : +33(0)4 92 23 03 11
<https://www.paysdesecrins.com/>



Source



Pays des Ecrins

<https://www.paysdesecrins.com>

On your path...



The vertical compressor (A)

In 1910, a 22-year-old engineer, Gilbert Planche arrived in L'Argentière-La Bessée to take advantage of the water here and open a large aluminium factory.

The vertical compressor is the forerunner of the pneumatic drill. The mine operators needed a large quantity of coal and compressed air helped to accelerate coal output. In 1852, Swiss physicist Jean-Daniel Colladon invented the pneumatic drill. The vertical compressor enabled the production of compressed air which powered a drill and simplified coal excavation. The compressor is placed vertically on its support, hence its name.

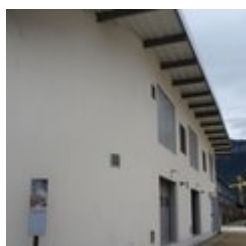
Attribution : Office de tourisme Pays des Écrins



Louis Leprince-Ringuet and L'Argentière (B)

Louis Leprince-Ringuet was the director of the Physics Laboratory of X ("X" being a polytechnic school in Villeurbanne) established in L'Argentière. During the summer of 1942, he took in several Jewish students, thus saving them from the Nazis and deportation to Auschwitz. A panel presents the discoveries made by Louis Leprince-Ringuet in this laboratory. A text by Bernard Lévi is also displayed. As a young Jewish student, he took part in research at the laboratory during the summer of 1942. In it he thanks the scientific team for helping him to escape the anti-Semitic barbarism.

Attribution : Office de tourisme du Pays des Écrins



The Péchiney factory (C)

This French electro metal company established itself in L'Argentière in 1907. The construction of the aluminium factory started in 1909 and it opened its doors in 1910, powered by the electricity plant built by Gilbert Planche. With it, L'Argentière became an industrial town. The economic crisis of the 1970s and the rise of foreign sources of supply led to the factory's closure in 1985. It was partially demolished in 1988. The workers left the town and in order to prevent the abandonment of L'Argentière, a restructuring project was launched.

Attribution : Office de tourisme Pays des Écrins



🕒 Former industrial area of L'Argentière-la-Bessée (D)

On the two walls of these now-disused industrial structures, you can read the history of L'Argentière-la-Bessée. The town is marked by its industrial past, in particular by the presence of a hydroelectric power station built between 1907 and 1909 to harness the power of the mountain waterfalls. At the time, it was the most powerful power station in Europe. Other industries were also established here, like the Société du Quartz Fondu fused quartz works and the aluminium factory which provided livelihoods for a large number of workers.

Attribution : Office de tourisme du Pays des Écrins



💧 The Durance (E)

The Durance is the biggest river in Provence. Its source rises in the municipality of Montgenèvre at an altitude of 2,390 metres, and it flows down to meet the Rhône to the south of Avignon. This is a "pluvio-nival" river, that is to say, its flow depends on the natural addition of water due to snowmelt and rainfall. It thus constitutes a real playground for kayakers from across Europe.

Attribution : Office de tourisme du Pays des Écrins



💧 The Fournel (F)

The source of the Fournel rises in the Fournel valley, in the heart of the Parc National des Écrins, and flows into the Durance near the white water stadium. It is known as a high alpine canyon offering lots of sport and leisure possibilities, and is the most popular in the Haut Val Durance. It is ideal for an introduction to vertical activities, in particular thanks to the presence of several jumps, toboggan runs and rappel sites. Access is authorised from April to October and is regulated because it is located upstream from an EDF water intake, which presents a real hazard.

Attribution : Office de tourisme du Pays des Écrins



The white water stadium (G)

As part of its restructuring after the closure of the industrial site, the town of L'Argentière-la-Bessée opted for sports tourism, exploiting the natural elements present on the site, that is to say, water. Standing at the beginning of the longest navigable section of the Durance river, in 1993 the municipality decided to establish itself as a major white water centre by creating this stadium which covers a 400-metre stretch. So thanks to its reputation and its ideal situation, every year this stadium hosts several elite competitions at national and international level.

Attribution : Office de tourisme du Pays des Écrins