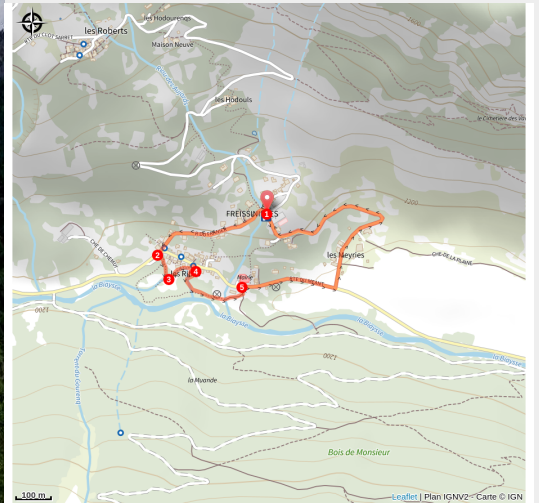


# RANDOLAND: Freissinières

Vallouise - Freissinières



(Pays des Écrins - Pierre Nossereau)



## *A heritage tour and treasure hunt in the unspoilt valley of Freissinières*

church, communal oven, water fountains This tour is the perfect opportunity to explore the territory and history of Freissinières, while enjoying exceptional natural scenery. Pick up a Randoland clue sheet to answer the riddles and observe the heritage features along the way .

### Useful information

Practice : By walk

Duration : 1 h 30

Length : 1.9 km

Trek ascent : 51 m

Difficulty : Very easy

Type : Loop

Themes : Flora, History and architecture

Accessibility : Family

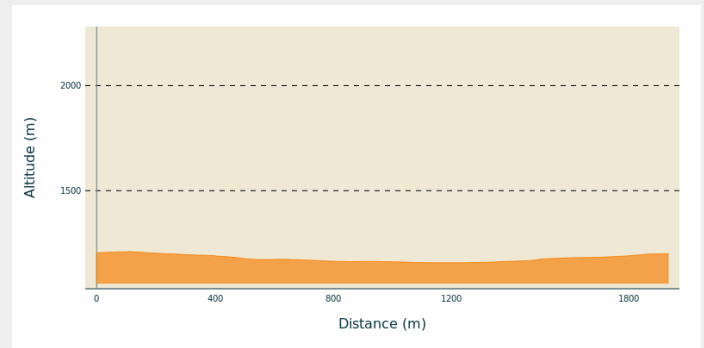
# Trek

**Departure** : Place du Souvenir, Town, Freissinières

**Arrival** : Place du Souvenir, Town, Freissinières

**Cities** : 1. Freissinières

## Altimetric profile

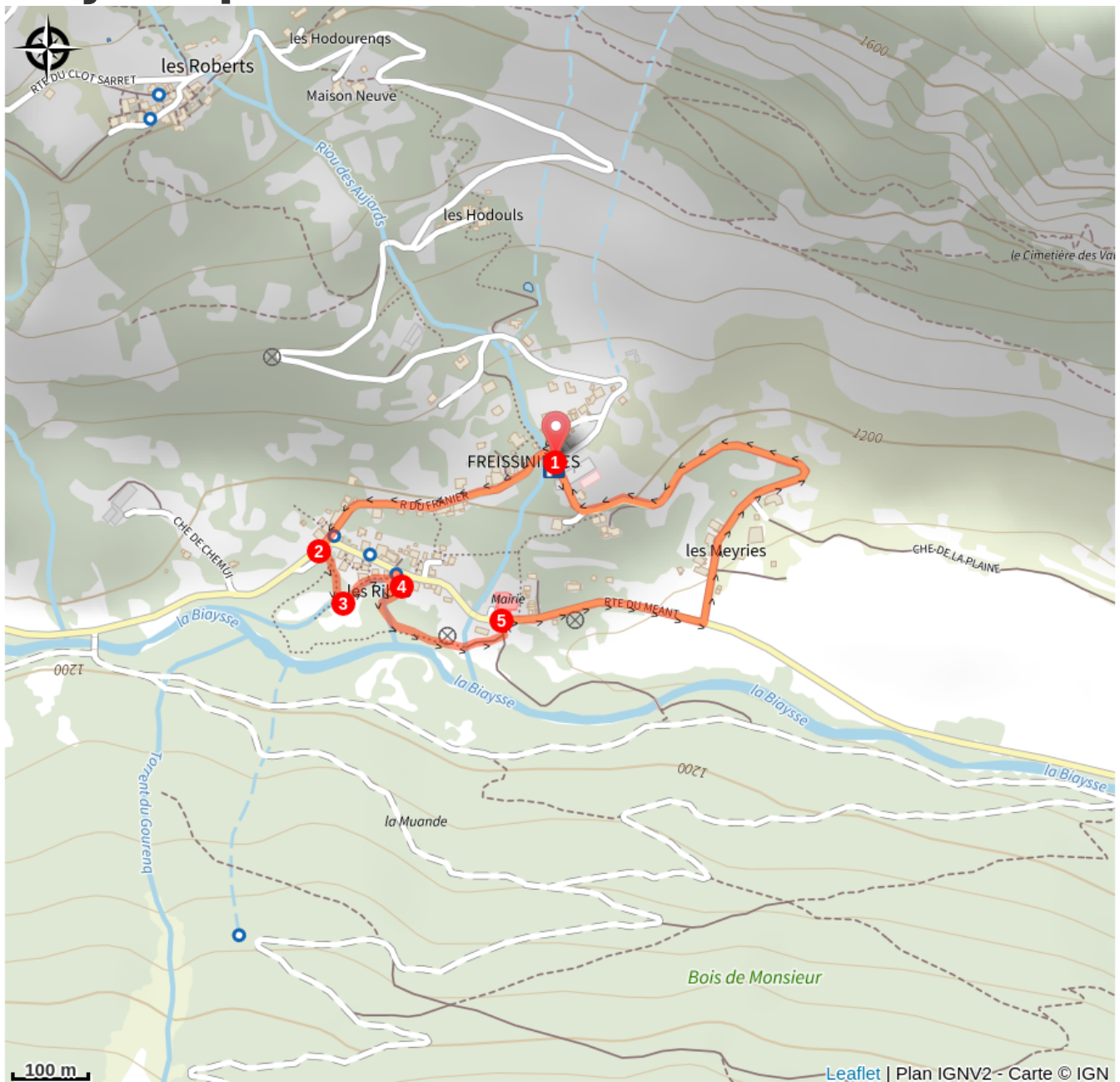


Min elevation 1158 m Max elevation 1211 m


The route starts at the Place du Souvenir, near the church of Saint Marie-Madeleine. First, take a look at the war memorial and water fountain on the square, for the answer to the first riddle. Go downhill to the church of Sainte Marie-Madeleine and then back to the Place du Souvenir.


1. After the water fountain, turn left and continue straight on to the next water fountain opposite the Relais des Vaudois hotel. Go into the car park.
2. Head down to the left towards the Chemin d'Alfred, but do not follow it. Cross the stream La Petite Beyère and go along the fence. Cross the irrigation canal (Grande Beyère).
3. Turn left. Follow the canal side until you come to the water fountain. The mill is opposite. You might find it helpful to look inside through the back window. Then go across the central reservation to look at the communal oven.
4. Go to the right of the oven and go upstream following the bank of the small stream. Continue on the raised path towards the Biaysse river and turn left to read the "La maison engloutie" panel, about a sunken house, on the Chemin d'Alfred. Continue to follow the river until you come to the next small water course, the Jaimes, which you follow upstream. Cross over the first bridge, heading towards some garages and carry on up towards the Valley Centre ("Maison de la Vallée").
5. Opposite the Valley Centre, go right. Carry on until you come to the crossroads and turn left into Les Meyries. Carry on up the road (or alternatively you can take the narrow path running uphill on the left, between the stream and the waste bin shelter). Further up, just before Ville, at the intersection between the path and the road, keep an eye out for the wooden wayside cross. Carry on uphill back to the starting point of the trail.

# On your path...



 Félix Neff (A)

 The petasites hybridus or butterbur (C)

 The church of Sainte Marie-Madeleine (E)

 Huile de marmotte - marmot oil (B)

 Freissinières (D)

# All useful information

## **Advices**

To download the Randoland clue sheets, visit the Office de Tourisme Intercommunal du Pays des Écrins website.

Check weather conditions before setting off.

Rescue services contact details: Secours Montagne (Mountain Rescue): +33 (0)4 92 22 22 22 or 112

Show consideration for the work of farmers, livestock keepers and owners

Close all gates behind you

Take your litter home

Do not take shortcuts across pastureland

## **How to come ?**

### Transports

Public transport >> [www.pacamobilite.fr](http://www.pacamobilite.fr)

Consider car-sharing >> [www.blablacar.fr](http://www.blablacar.fr)

For more information, ask at the Tourist Information Office nearest to the trail starting point.

### Access

11.5 km from L'Argentière-La Bessée, take the N94.

### Advised parking

Car park Place du Souvenir, town, Freissinières

## **Accessibility**

---

Family

## **Information desks**

### **Vallouise Park house**

vallouise@ecrins-parcnational.fr

Tel : 04 92 23 58 08

<http://www.ecrins-parcnational.fr/>



### **Bureau d'Information Touristique de L'Argentière-La Bessée**

23 Avenue de la République, 05120

L'Argentière-La Bessée

contact@paysdesecrins.com

Tel : +33(0)4 92 23 03 11

<https://www.paysdesecrins.com/>



## **Source**



Pays des Ecrins

<https://www.paysdesecrins.com>

# On your path...

---



## 🕒 Félix Neff (A)

Félix Neff was a Swiss Protestant pastor. He was responsible for the Protestant Revival in the Freissinières valley in the seventeenth century. He also set up the first education college for primary school teachers in France, in Dormillouse in 1826. He was also behind new irrigation and house-building techniques, developments which improved the everyday lives of the local people.

Attribution : Manuel Meester - Parc national des Écrins

---

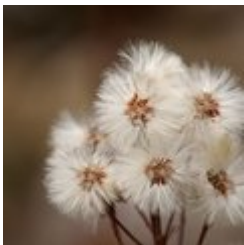


## 🌸 Huile de marmotte - marmot oil (B)

In times past, the inhabitants of Freissinières used oil for cooking and lighting. Walnut or almond oil was difficult to produce at this high altitude. The Briançon plum tree or marmottier, however, can withstand the mountain conditions, and the yellow fruits of this tree contain kernels. These kernels were pressed in mills to produce an oil with medicinal virtues: marmot oil. .

Attribution : Bernard Nicollet - Parc national des Écrins

---



## 🌸 The petasites hybridus or butterbur (C)

On the banks of the stream there is a plant with very broad leaves: the petasites hybridus or butterbur. In Ancient Greek, the petasos was a round felt hat. Nobody knows whether the devil wears this hat, but the plant is certainly used as a herbal remedy. Common in the lowlands, it is generally quite scarce in the mountains, although other species of petasites do grow at higher altitude. In any event, it makes a great hat!

Attribution : Mireille Coulon - Parc national des Écrins

---





## Freissinières (D)

The name Freissinières comes from the old word freissinière meaning "black ash". This municipality, which extends as far as the Col des Terres Blanches and the Col de Freissinières, both of which overlook the Champsaur valley, is made up of thirteen hamlets, although none of them are called Freissinières! Archaeological excavations carried out twenty years ago show that sites at high altitude (such as Faravel) were occupied on a seasonal basis from the retreat of the glaciers 12,000 years ago (Upper Palaeolithic period) and that this occupation continued after that.

Attribution : Office de tourisme Pays des Écrins

---



## The church of Sainte Marie-Madeleine (E)

The church of Sainte Marie-Madeleine was built in the seventeenth century. It is thought to be a former Protestant church which escaped destruction in 1684 when Louis XIV was leading an anti-Protestant drive. The Protestant church is then thought to have undergone works to convert it into a Catholic church.

Attribution : Office de tourisme Pays des Écrins