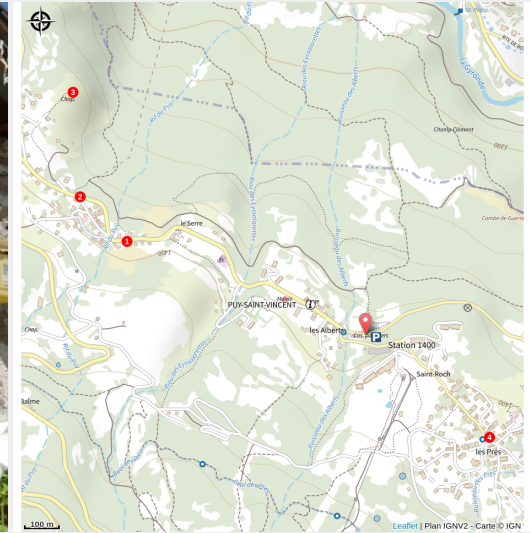


The Puy Saint-Vincent Heritage Path

Vallouise - Puy-Saint-Vincent



Le four banal (Office de tourisme Pays des Écrins)



A peaceful trail leading through hamlets, meadows and woods

A perfect combination of discoveries: hamlets, human heritage and an excursion bordering meadows and small woods, enhanced by crossings over little bridges spanning cool refreshing streams!

Useful information

Practice : By walk

Duration : 1 h 30

Length : 5.3 km

Trek ascent : 122 m

Difficulty : Very easy

Type : Return trip

Themes : Fauna, Flora, History and architecture

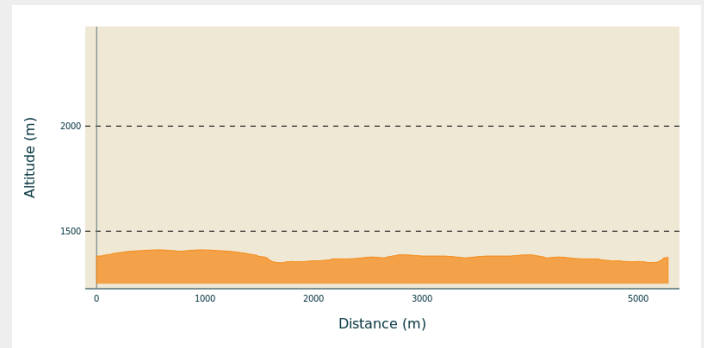
Trek

Departure : Just outside Puy Saint-Vincent - Les Alberts

Arrival : Just outside Puy Saint-Vincent - Les Alberts

Cities : 1. Puy-Saint-Vincent

Altimetric profile



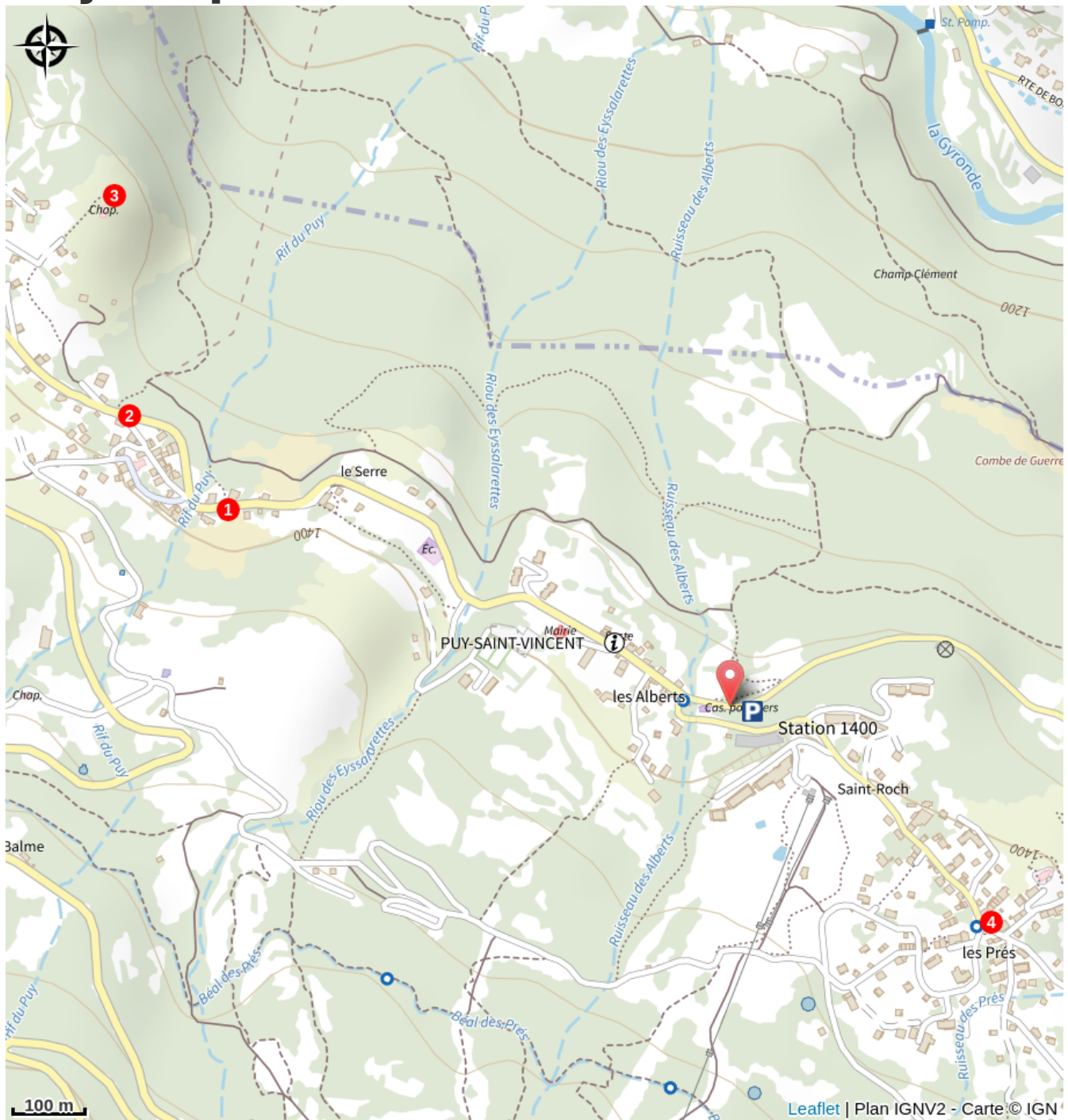
Min elevation 1351 m Max elevation 1412 m

Waysigning: follow the heritage path signs for Les Prés-Saint Romain (« Sentier du patrimoine – Les Prés – Saint Romain »


A large sign “Sentier du Patrimoine” on the D4 just before you enter Puy Saint-Vincent indicates the start of the path. Head towards the track lower down which runs level below the various hamlets of Puy Saint-Vincent, alternating between meadows and groves of trees.

1. At the crossroads with the D4, go through the hamlet of Le Puy, past the communal oven and the church.
2. On the D4, take the road running downhill past some wooden guardrails and then continue straight ahead until you come to the Chapelle Saint-Romain.
3. At the Chapelle Saint-Romain, turn back on yourself and follow the outward route in reverse. At the “Sentier du Patrimoine” sign you passed at the beginning of the trail, you can continue the itinerary as far as the hamlet of Les Prés by taking the footpath on the left just after you enter Puy Saint-Vincent. Carry on to the large multi-storey car park. Skirt around it by taking the stairs and carry straight on towards Les Prés.
4. At the crossroads, fork left and then continue straight ahead until you come to the Chapelle Sainte Marie Madeleine.

On your path...




 Les Prés, hamlet of Puy-Saint-Vincent (A)

 The Sentier du Facteur - the postman's path (C)

 The ash tree (E)

 The aspen (G)

 The church of Sainte-Marie-Madeleine-des-Prés and its two sun dials (B)

 The clouded Apollo (D)

 The Eurasian blackcap (F)

 The chapel of Saint-Romain (H)

All useful information

Advices

The itinerary can be followed in either direction.

Information panels explaining the human heritage are provided along the way.

Check weather conditions before setting off.

Rescue services contact details: Secours Montagne (Mountain Rescue): +33 (0)4 92 22 22 22 or 112

Show consideration for the work of farmers, livestock keepers and owners

Close all gates behind you

Take your litter home

Do not take shortcuts across pastureland

How to come ?

Transports

Public transports >> www.pacamobilite.fr

Consider car-sharing >> www.blablacar.fr

For more information, ask at the Tourist Information Office nearest to the trail starting point.

Access

8.5 km from L'Argentière-La Bessée, take the D994E and then the D4.

Advised parking

Car park as you enter Puy Saint-Vincent 1400

Information desks

Vallouise Park house

vallouise@ecrins-parcnational.fr
Tel : 04 92 23 58 08
<http://www.ecrins-parcnational.fr/>



Bureau d'Information Touristique de Puy Saint Vincent 1400

Les Alberts, 05290 Puy Saint Vincent
1400 m

contact@paysdesecrins.com
Tel : +33(0)4 92 23 35 80
<https://www.paysdesecrins.com/>



Source



Pays des Ecrins

<https://www.paysdesecrins.com>

On your path...



Les Prés, hamlet of Puy-Saint-Vincent (A)

Le Prés is one of the main hamlets of Puy-Saint-Vincent. Like Le Puy and Les Alberts, it stands on a flat plateau which is a glacial escarpment left by the now-retreated Gyronde glacier. Like Prey d'Aval, Prey du Milieu and Prey d'Amant, its name is a reminder that prior to the development of the ski resort, the land here used to be shared by meadows and crops.

Attribution : Marie-Geneviève Nicolas - Parc national des Écrins



The church of Sainte-Marie-Madeleine-des-Prés and its two sun dials (B)

The charming little church of Sainte-Marie-Madeleine-des-Prés, which dates from the sixteenth century, stands in the hamlet of Les Prés. It is surrounded by a wall and a cemetery. On the walls of the church, two sun dials can be seen, both engraved and painted on plaster in 1718. The first is above the door, telling the time in the afternoon, bearing the saying « *for a moment of delights, an eternity of torments* » which alludes to the life of Saint Mary Magdalene, the well-known sinner who is venerated as a model of penitence. The second, telling the time in the morning, bears the Latin phrase *Ars longa, vita brevis* which translates as « learning is long, life is short ».

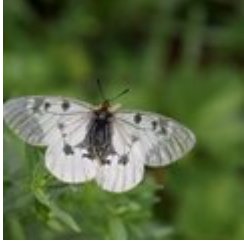
Attribution : Office de tourisme Pays des Écrins



The Sentier du Facteur - the postman's path (C)

In former times, the postman would take this path every day: He would set out from Vallouise, deliver letters in Puy-Saint-Vincent and drop back down to Vallouise, stopping at the hamlets of Parcher on the way. In the winter, when the snow was too deep, the Traversouires (the inhabitants of Puy-Saint-Vincent) donned their snowshoes and wielded their shovels to clear the postman's path down to Vallouise.

Attribution : Christophe Albert - Parc national des Écrins



The clouded Apollo (D)

This butterfly with hyaline (glass-like) translucent white wings, marked with two black spots, flutters around the clearing or the edges of the forest, where the host plants of its caterpillars grow: the corydalis. Although abundant locally, it is nevertheless a species in sharp decline and is protected.

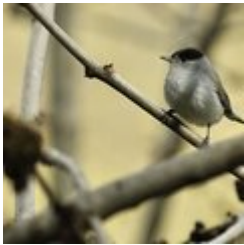
Attribution : Mireille Coulon - Parc national des Écrins



The ash tree (E)

This is one of the most common trees, provided the ground is relatively cool. It is characterised by its pinnate leaves, that is to say, made up of several segments, and in winter it can be recognised by its large black leaf buds. The ash was extremely important in times past: its foliage was used to feed cattle and its hard, flexible wood was used to make a variety of objects such as tool handles.

Attribution : Marie-Geneviève Nicolas - Parc national des Écrins



The Eurasian blackcap (F)

Hidden in the tree foliage, the Eurasian blackcap announces its presence with its loud and piping song. Its head is adorned with a cap which is black in the male and russet in the female. The rest of its plumage is greyish, its underside lighter than its back. It is a migratory bird which travels to the Maghreb to overwinter. However, increasing numbers of birds make only a partial migration, flying to the south of France to spend the winter.

Attribution : Mireille Coulon - Parc national des Écrins



The aspen (G)

A sizeable aspen grows on the roadside, on the edge of a small wood of fellow-aspens. This tree has a smooth, greenish trunk and rounded, crenelated leaves which take on magnificent colours in autumn. The stem, or petiole, of aspen leaves is flat and twisted, so it can be caught by the slightest breeze making the foliage «quake» hence its common name, the quaking aspen. It grows in places where the soil is quite damp.

Attribution : Bernard Nicollet - Parc national des Écrins



The chapel of Saint-Romain (H)

Included on the Supplementary Inventory of Historical Monuments in 1931, the chapel of Saint-Romain has been converted into an eco museum. It was the first chapel to be built in Puy-Saint-Vincent and is thought to date from the twelfth century. Up to the mid-fifteenth century, the village bore the name of its patron saint: Puy-Saint-Romain. Then, in honour of the arrival of the Dominican monk Vincent Ferrier, the village took the name Puy-Saint-Vincent. It stands on a rocky promontory outside the village, and offers a panoramic view over the Les Écrins massif and the Gyrone Valley, over Vallouise in particular.

Attribution : Office de tourisme Pays des Écrins