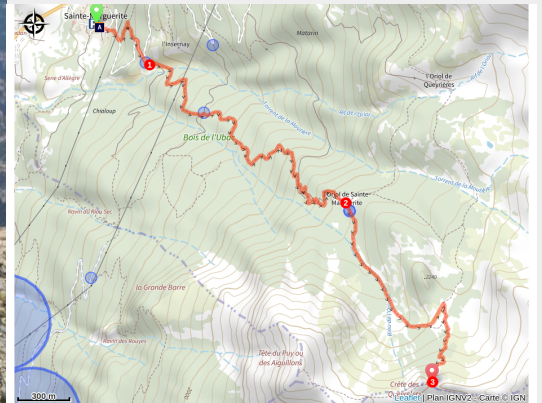


Les Oriols (trail route no. 9)



(Thibaut Blais)



This loops offers insights into rural life as well as astonishing views, and you can also take in high-alpine landscapes!

This trail offers not only a magnificent view over the majestic Mont Pelvoux, but also a discovery of the high-mountain hamlets where a pastoral way of life continues to this day. Was that a high-pitched whistle? Keep your eyes peeled, the iconic marmot must be nearby!

Useful information

Practice : Trail

Duration : 3 h

Length : 4.9 km

Trek ascent : 1160 m

Difficulty : Hard

Type : Return trip

Themes : Panorama

Trek

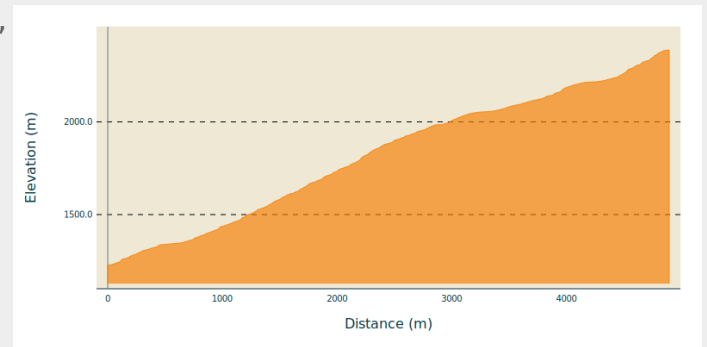
Departure : Hamlet of Sainte-Marguerite,
Saint-Martin-de-Queyrières

Arrival : Hamlet of Sainte-Marguerite,
Saint-Martin-de-Queyrières

Markings :  Trail

Cities : 1. Saint-Martin-de-Queyrières
2. La Roche-de-Rame

Altimetric profile

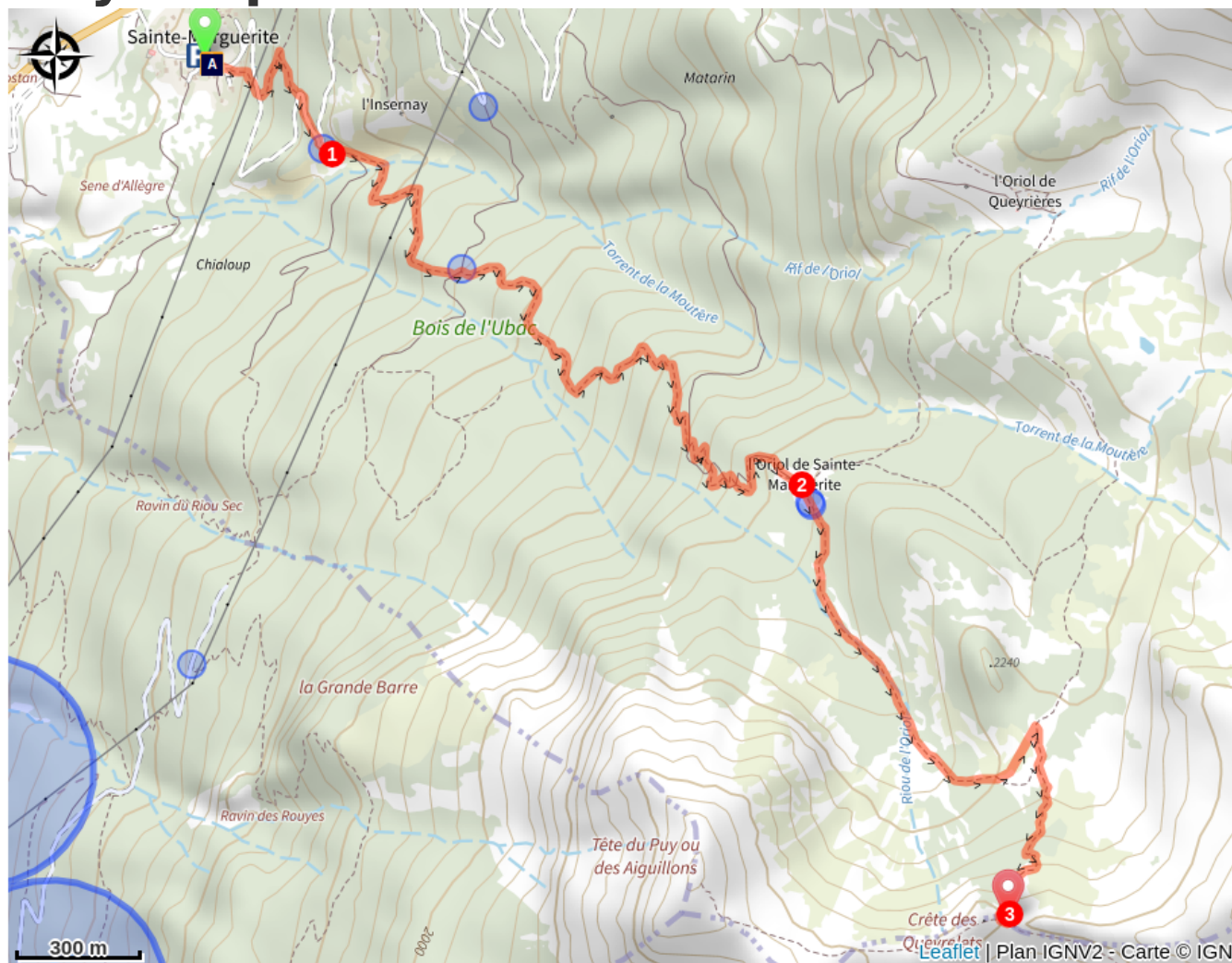


Min elevation 1227 m Max elevation 2387 m

Starting from the hamlet of Sainte-Marguerite, head uphill towards L'Oriol de Sainte-Marguerite.

1. At the intersection, turn left and carry on along the track until you come to L'Oriol de Sainte-Marguerite.
2. At L'Oriol de Sainte-Marguerite, after the chapel, take the track on the right and continue straight on until you come to L'Oriol de Queyrières.
3. Here, take the path on the right which takes you to a short section of sharp scree, which you need to cross.
4. Take the path on the left to drop downhill through a forest to the hamlet of Sainte-Marguerite.
5. Take the track on the right to continue the descent and then back to your starting point.

On your path...



 The hamlet of Sainte-Marguerite
(A)

All useful information

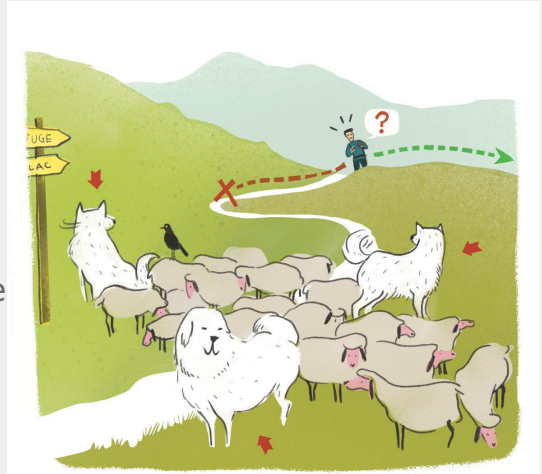
i Herd protection dogs

In mountain pastures, protection dogs are there to protect the herds from predators (wolves, etc.).

When I hike I adapt my behavior by going around the herd and pausing for the dog to identify me.

Find out more about the actions to adopt with the article "[Protection dogs: a context and actions to adopt](#)".

Tell us about your meeting by answering this [survey](#).



! Advices

Before setting off, it is very important to check the opening periods for this route on the website: <https://stationdetrail.com/fr/stations/le-pays-des-ecrins/parcours>

Share your photographs on social networks with #stationdetrailecrins

Check weather conditions before setting off.

Rescue services contact details: Secours Montagne (Mountain Rescue): +33 (0)4 92 22 22 22 or 112

Show consideration for the work of farmers, livestock keepers and owners

Close all gates behind you

Take your litter home

Do not take shortcuts across pastureland

The trail routes are also suitable for walking

How to come ?

Transports

Public transports >> www.pacamobilite.fr

Consider car-sharing >> www.blablacar.fr

For more information, ask at the Tourist Information Office nearest to the trail starting point.

Access

7 km from L'Argentière-La Bessée, take the N94.

Advised parking

Car park in the hamlet of Sainte-Marguerite, Saint-Martin-de-Queyrières

Information desks

Vallouise Park house

vallouise@ecrins-parcnational.fr
Tel : 04 92 23 58 08
<http://www.ecrins-parcnational.fr/>



Bureau d'Information Touristique de L'Argentière-La Bessée

23 Avenue de la République, 05120
L'Argentière-La Bessée
contact@paysdesecrins.com
Tel : +33(0)4 92 23 03 11
<https://www.paysdesecrins.com/>



Source



Pays des Ecrins

<https://www.paysdesecrins.com>

On your path...



The hamlet of Sainte-Marguerite (A)

Saint-Martin-de-Queyrières is a municipality located in the historic Briançonnais area, higher up from Pertuis-Rostan (the former name of Sainte-Marguerite) which was once the border between the Briançonnais area and the Embrunais area. The local people (the Saint-Martinous) are divided between Saint-Martin and the various surrounding hamlets such as Sainte-Marguerite, which stands at an altitude of 1,200 metres. It is possible to reach Sainte-Marguerite via the Travers de Queyrières, which used to be very difficult to cross. The Chapel of Saint-Marguerite stands in this hamlet. It dates from the late fifteenth or early sixteenth century.

Attribution : Office de tourisme Pays des Écrins