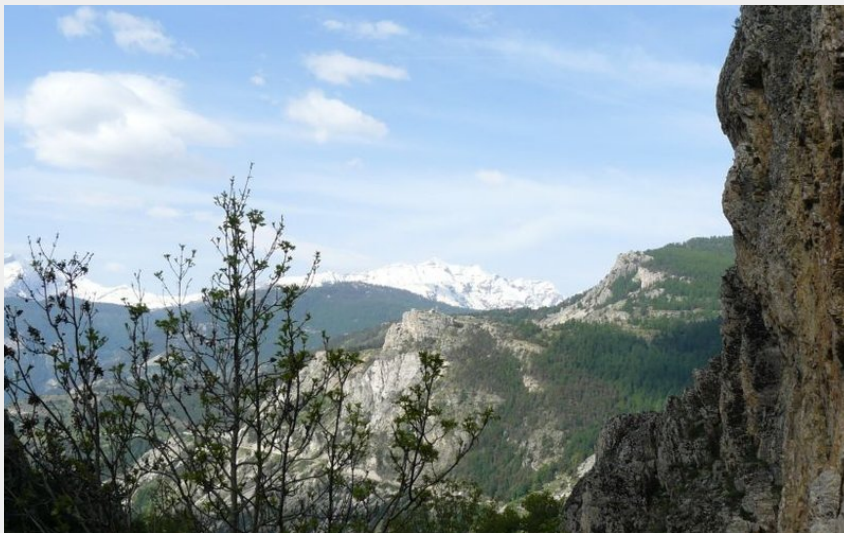
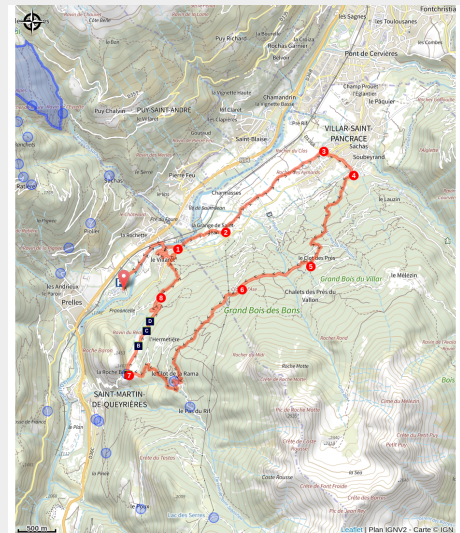


The tour of the Rocher Baron (trail route no. 4)



Saint-Martin-de-Queyrières et Rocher Baron au printemps (Office de tourisme Pays des Écrins)



*A trail leading to the plateau of the Rocher Baron where an unrivalled view over one of the main climbing sites in the Pays de Écrins awaits you. *

Listen to the soft calls of the bullfinch, watch the crickets which come in every colour, feel the undulations of the ripple marks, breathe in the scent of the conifers and enjoy watching the exploits of the climbers on the Rocher Baron. The tour of the Rocher Baron will awaken your senses!

Useful information

Practice : Trail

Duration : 3 h

Length : 14.7 km

Trek ascent : 555 m

Difficulty : Easy

Type : Loop

Themes : Fauna, Flora

Trek

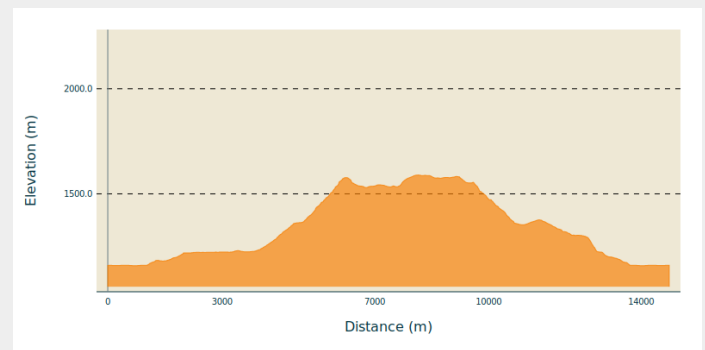
Departure : Camping de l'Isle de Prelles, Saint-Martin-de-Queyrières

Arrival : Camping de l'Isle de Prelles, Saint-Martin-de-Queyrières

Markings :  Trail

Cities : 1. Saint-Martin-de-Queyrières
2. Villar-Saint-Pancrace

Altimetric profile

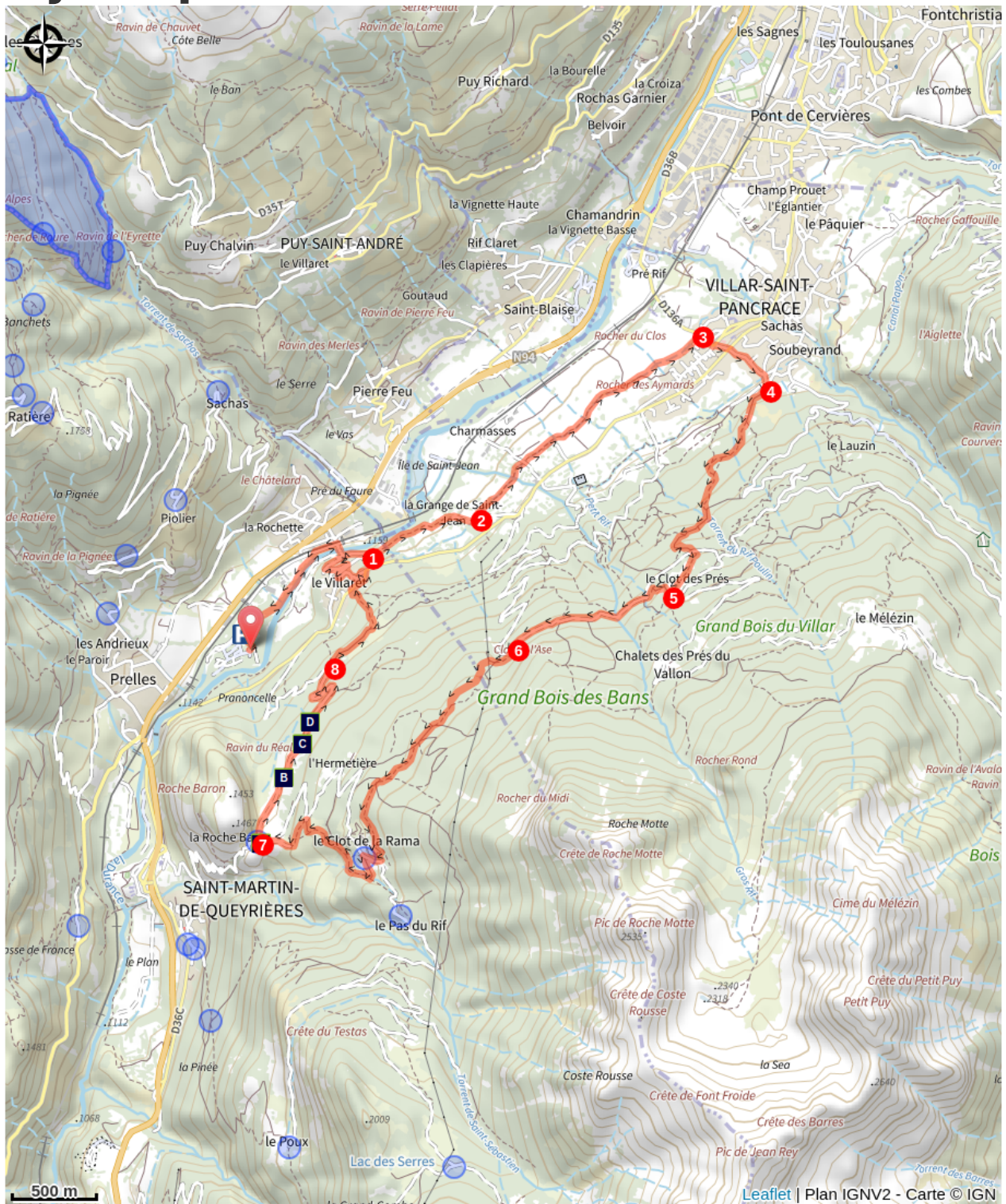


Min elevation 1158 m Max elevation 1590 m

Starting from the campsite, head towards the hamlet of Le Villaret and go through it.

1. After the hamlet, take the path on the left which leads to the plateau of the Rocher Baron.
2. At the intersection at the Rocher Baron, fork right to start the descent through stony terrain.
3. When you come to the Ressourcerie la Miraille reclamation and repurposing centre, skirt around it. At the give-way sign, head left towards the D36C. Then cross the bridge and at the roundabout head towards Le Villaret. Carry on along the D36 until you come to the hamlet of Le Villaret, then head back to the campsite following your outward route in reverse.

On your path...



The large marsh grasshopper (A)



The larch (C)



The bullfinch (B)



The alpine anemone (D)

All useful information

Herd protection dogs

In mountain pastures, protection dogs are there to protect the herds from predators (wolves, etc.).

When I hike I adapt my behavior by going around the herd and pausing for the dog to identify me.

Find out more about the actions to adopt with the article "[Protection dogs: a context and actions to adopt](#)".

Tell us about your meeting by answering this [survey](#).



Advices

Before setting off, it is very important to check the opening periods for this route on the website: <https://stationdetrail.com/fr/stations/le-pays-des-ecrins/parcours>

Share your photographs on social networks with #stationdetrailecrins

Check weather conditions before setting off.

Rescue services contact details: Secours Montagne (Mountain Rescue): +33 (0)4 92 22 22 22 or 112

Show consideration for the work of farmers, livestock keepers and owners

Close all gates behind you

Take your litter home

Do not take shortcuts across pastureland

The trail routes are also suitable for walking

How to come ?

Transports

Public transport >> www.pacamobilite.fr

Consider car-sharing >> www.blablacar.fr

For more information, ask at the Tourist Information Office nearest to the trail starting point.

Access

10 km from L'Argentière-La Bessée, take the N94.

Advised parking

Parking Camping de l'Isle de Prelles, Saint-Martin-de-Queyrières

Information desks

Vallouise Park house

vallouise@ecrins-parcnational.fr

Tel : 04 92 23 58 08

<http://www.ecrins-parcnational.fr/>



Bureau d'Information Touristique de L'Argentière-La Bessée

23 Avenue de la République, 05120
L'Argentière-La Bessée

contact@paysdesecrins.com

Tel : +33(0)4 92 23 03 11

<https://www.paysdesecrins.com/>



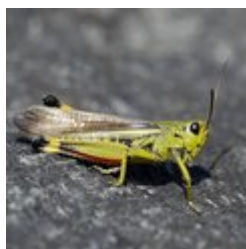
Source



Pays des Ecrins

<https://www.paysdesecrins.com>

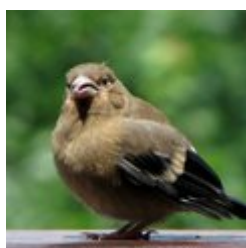
On your path...



The large marsh grasshopper (A)

In the wet areas beside the streams lives the large marsh grasshopper. Its French name, *criquet engsanglanté*, translates as the "bloodied grasshopper" because the female has purple-red marks which stand out against her general green colour. Her eggs are drought-sensitive so she only lays them in damp soil. When courting the female, the male does not chirp but makes clicking sounds, which he produces by stretching his hind leg in a sudden movement.

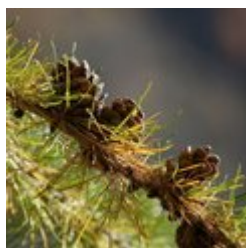
Attribution : Mireille Coulon - Parc national des Écrins



The bullfinch (B)

Gentle and melancholic calls can be heard coming from trees in the forest. They are the calls of the bullfinch, a plump and timid little passerine. The male can be identified from his pinkish red underside, while the female's is beige. Both have a black cap. They often live in small groups, staying in contact with one another through their little calls. It is a year-round resident.

Attribution : Christophe Albert - Parc national des Écrins



The larch (C)

Golden yellow needles in autumn, purple cones in the spring... The larch offers colour interest throughout the year, and rather suits its title "the tree of light". It drops its soft deciduous needles in autumn and winter. In spring, the slender branches of this conifer are dotted with female flowers, which will develop into cones, and male flowers. The larch thrives on the north-facing slopes and lights up the mountainsides.

Attribution : Robert Chevalier - Parc national des Écrins



✿ The alpine anemone (D)

The alpine anemone or the alpine pulsatilla blooms here in the spring. It is a plant with a downy covering of white hairs on the large drooping flowers which are dark purple, contrasting with the bright yellow of the numerous stamens, and with very indented leaves. In summer, its fruits with a long pappus, or tuft, form a feathery seed head atop the stem. Although it is frequently found in localised areas, it is nevertheless a rare species dependent on steppe meadows in the Durance valley.

Attribution : Thierry Maillet - Parc national des Écrins