

# The jas des Agneaux by the Combe des Roberts

Parc national des Ecrins



Vêt vu du Jas des Agneaux (Bernard Nicollet - PNE)



*This hike, above the village of Entraigues, shows the way that man was organized to get the most out of the agriculture and forestry...*

« Striding along this trail, it is difficult to not pay a tribute to those who have gone before us, those who have worn away the rock, built the large and small retaining walls and traced multiple tracks, enabling us to reach Jas des Agneaux without a problem »

*Bernard Nicollet, Park ranger at Valbonnais*

## Useful information

Practice : By walk

Duration : 5 h 15

Length : 9.7 km

Trek ascent : 1170 m

Difficulty : Hard

Type : Return trip

Themes : Flora, Geology,  
Panorama

# Trek

**Departure** : Entraigues

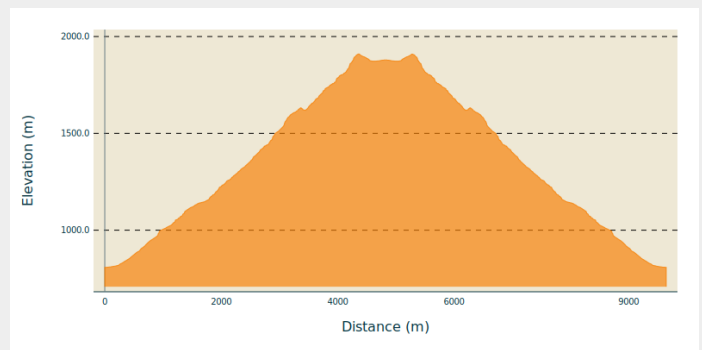
**Arrival** : Entraigues

**Markings** : — PR

**Cities** : 1. Entraigues

2. Le Périer

## Altimetric profile








Min elevation 808 m Max elevation 1910 m

From the parking at Entraigues church, follow the road to Valjouffrey until the last garden and take a left onto the marked trail at Vêt-Lac Gary. This follows the torrent descending from the combe Drayre then goes up at a big crossing rising onto a scree, and then winds down in the rocky ridges. The trail crosses a beech wood then continues by mounting swiftly getting close to the Combe des Roberts, then crossing it still gaining in altitude to the right bank.. At the fork at Jas des Agneaux/Cabane du Vêt-Lac Gary, the slope becomes less steep. Take an elevated path to the left to join the Jas des Agneaux.

# On your path...



-  Flora on the scree slopes (A)
-  Green Lizard and Wall Lizard (B)
-  Beech forest and mushrooms (C)
-  Bearberries and Heather (D)
-  Spilites (E)



# All useful information

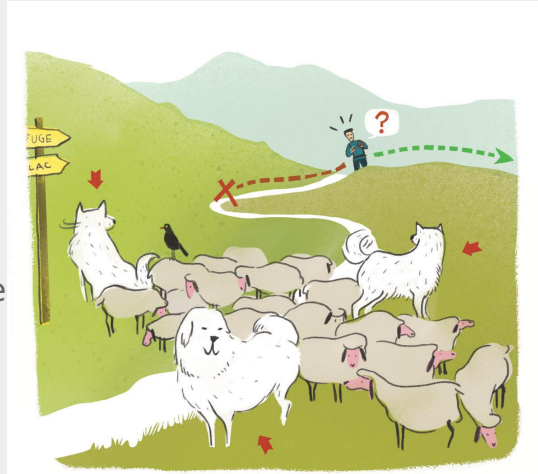
## Herd protection dogs

In mountain pastures, protection dogs are there to protect the herds from predators (wolves, etc.).

When I hike I adapt my behavior by going around the herd and pausing for the dog to identify me.

Find out more about the actions to adopt with the article ["Protection dogs: a context and actions to adopt"](#).

Tell us about your meeting by answering this [survey](#).



## Is in the midst of the park

The national park is an unrestricted natural area but subjected to regulations which must be known by all visitors.



## Advices

Absence of a source. Possibility of returning through the forest of Pissard des Aiguilles and Dessous la Roche.

## How to come ?

### Transports

Coach stop Translsère at Entraigues

### Access

On the N85, take the D526 in the direction of Entraigues.

### Advised parking

Near to Entraigues Church

## Information desks

### Maison du Parc du Valbonnais

Place du Docteur Eyraud, 38740

Entraigues

valbonnais@ecrins-parcnational.fr

Tel : 04 76 30 20 61

<http://www.ecrins-parcnational.fr/>



## Source



Parc national des Ecrins

<https://www.ecrins-parcnational.fr>

# On your path...

---



## ✿ Flora on the scree slopes (A)

The flora on the crystalline scree slopes at low altitude is adapted to very high temperatures which are due not only to the sun but also to the structure of the soil. Here, dark coloured stones have accumulated on the slopes, oriented like solar panels forming a group, favourable to stockage and radiation. Wild roses of all kinds, spiky shrubs thistles have hardened to this atmosphere but so have the Sweet William and the Sheep's Bit Scabious.

Attribution : Bernard Nicollet - PNE

---



## 🦎 Green Lizard and Wall Lizard (B)

Two species with legs stay close to the track. Quick as a flash, these little saurians escape from your presence while signaling their own... One, around thirty centimeters is impressive because of its size and is green blue colour; it is the green lizard... The other, russet coloured, much smaller is very common, it has not been named by accident; it is the wall lizard. Both feed on insects and hibernate in the cold season...

Attribution : Bernard Nicollet - PNE

---



## ✿ Beech forest and mushrooms (C)

From an altitude of 1300m, there is an unexpected forest, containing crooked trees, with many branches and smooth grey bark... Some beech trees are grouped there, projecting their shade onto a less hostile slope... They include a dried beech tree on acidic soil, which characteristically does not welcome many flowering plants... A thick carpet of dead leaves crunches underfoot and is punctuated by rare Snowy Wood Rush in Summer and, luckily, Penny Bun and Black Trumpet mushrooms at the end of Autumn.

Attribution : Bernard Nicollet - PNE



## Bearberries and Heather (D)

The highest elevated places, rather bare and well exposed on this hike are covered with flowerbeds with miniature shrubs. They contain Bearberries, or busserole, with round evergreen leaves and little red fruits. At the end of the summer, it is not rare to see the appearance between these bushes of bouquets of pink flowers, they are heather. Also called callune. It is calcifuge.

Attribution : Bernard Nicollet - PNE

---



## Spilites (E)

The elevated crossing to jas des Agneaux has the particularity of being dominated by a quite remarkable geological feature.

While you have continued to follow the crystalline base of the massif, you will then see below you the end of this kind of rock marked by a seam of volcanic origin, purplish black and several meters high: these are the spilites. Positioned on these, is an immense limestone cone which constitutes the summit of Vêt. This geological feature is highly visible from the departmental road going down to Entraigues.

Attribution : Bernard Nicollet - PNE