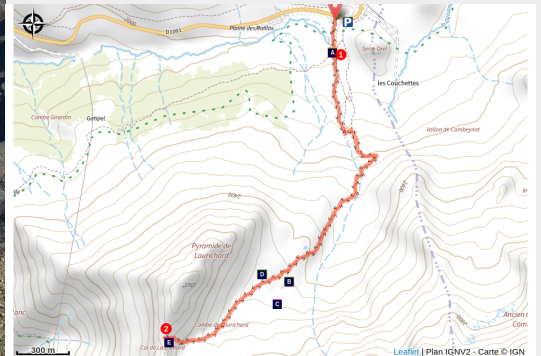


Laurichard Mountain Pass

Briançonnais - Villar-d'Arêne



La pyramide de Laurichard depuis le col éponyme (Cyril Coursier - Parc national des Ecrins)



Permafrost and rock glacier... a hike in the land of cold pebbles.

On the track, at an altitude of about 2500 m, look about! In the South/South East direction you can see at the foot of the Western peak of the Combeynot four white spheres (about 35 cm in diameter)... they are the landmarks enabling scientists to measure the evolution of the rock glacier at Laurichard.

Useful information

Practice : By walk

Duration : 4 h

Length : 5.8 km

Trek ascent : 601 m

Difficulty : Medium

Type : Return trip

Themes : Fauna, Lake and glacier, Panorama

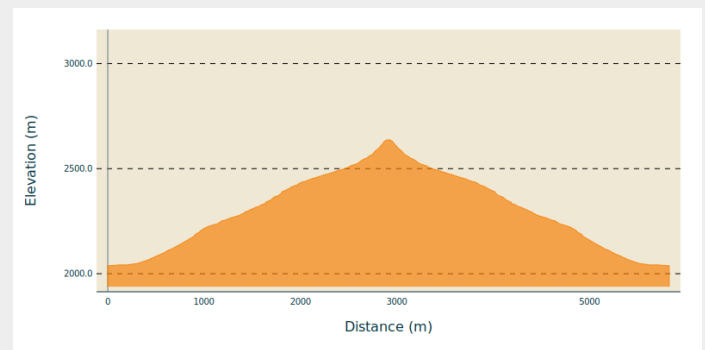
Trek

Departure : Col du Lautaret

Arrival : Col du Lautaret

Cities : 1. Villar-d'Arêne

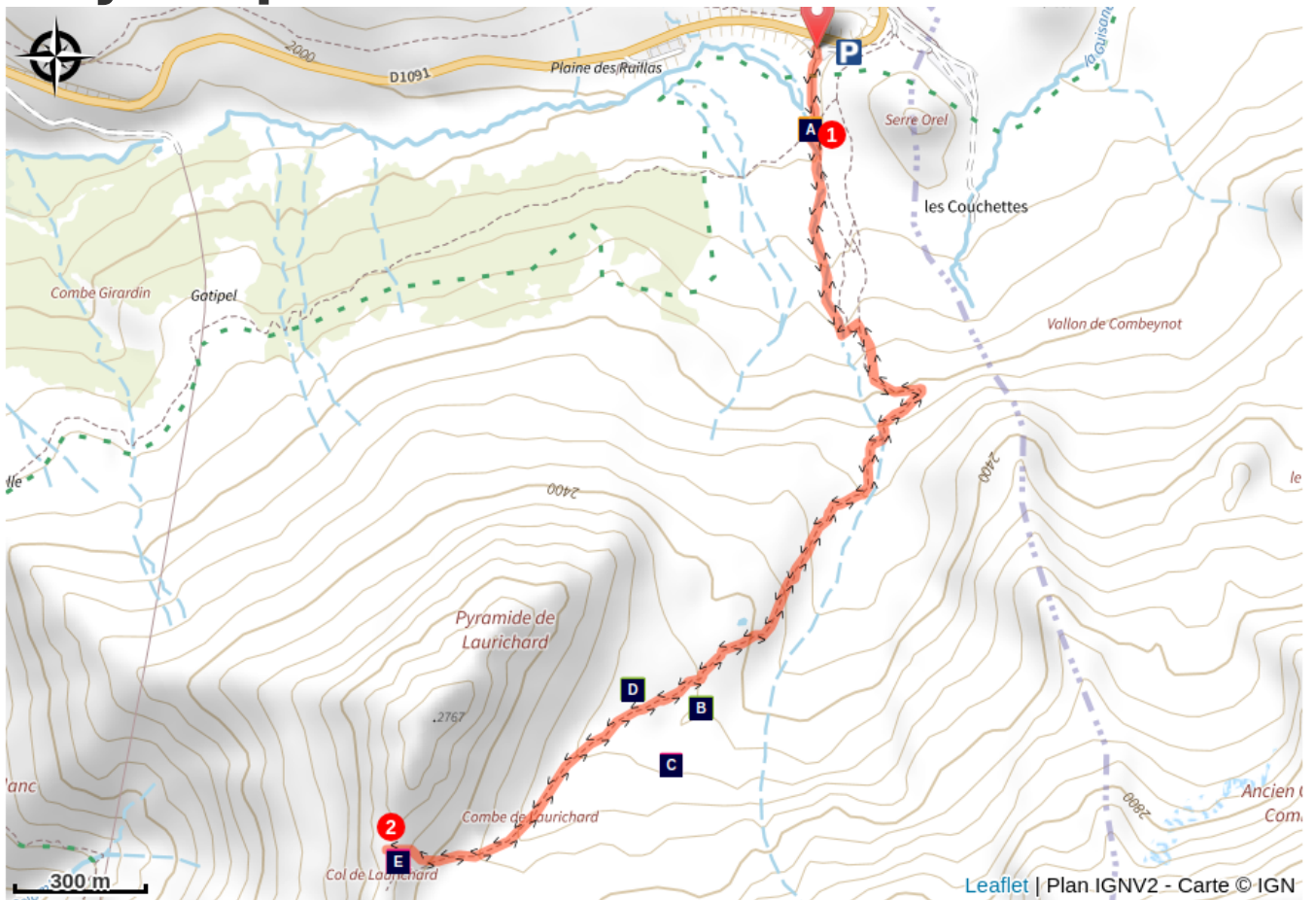
Altimetric profile








Min elevation 2038 m Max elevation 2637 m

Leave the car park at the foot of Serre Orel to start the ascent in the direction of the Combe de Laurichard. Do not hesitate to look at the signs in the car park, marked « porte du parc national des Ecrins ». 250 m after the car park, the track divides into two: stay on the one that goes up towards Laurichard and leave to your right the « track for the interpretation of crevasses ». The slope accentuates progressively up to the entrance of the Combe de Laurichard (alt. 2300 m), mineral world 'par excellence'. The path follows its route at the foot of the South-East face of the pyramid of Laurichard and looks up at the imposing Northern faces, somber and austere, the summits at Combeynot (black rock of Combeynot and the West peak of Combeynot). It is at the foot of these two mineral giants that the Laurichard rock glacier is found with its permafrost – the soil is permanently frozen – but for how much longer, due to global warming? - Continue the ascent to reach Laurichard mountain pass, the panorama embraces the entire Meije massif and the surrounding summits (pic Gaspard, pointe Nérot, Bec de l'Homme,). For the descent, use the same itinerary in the opposite direction.

On your path...



-  Dismantled ski-lifts (A)
-  Rock glacier (C)
-  Laurichard Mountain Pass (E)

-  Fringed sedge (B)
-  Rock Ptarmigan (D)

All useful information

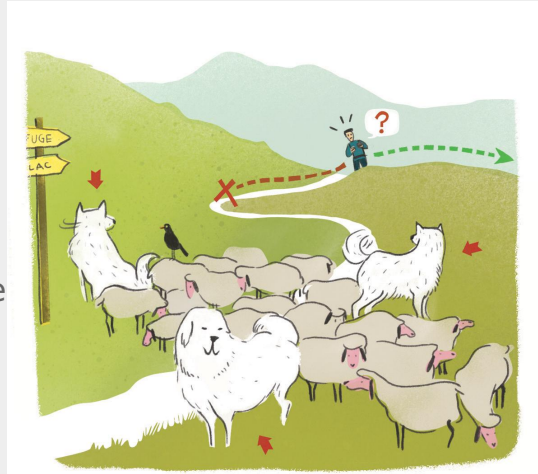
Herd protection dogs

In mountain pastures, protection dogs are there to protect the herds from predators (wolves, etc.).

When I hike I adapt my behavior by going around the herd and pausing for the dog to identify me.

Find out more about the actions to adopt with the article ["Protection dogs: a context and actions to adopt"](#).

Tell us about your meeting by answering this [survey](#).



Is in the midst of the park

The national park is an unrestricted natural area but subjected to regulations which must be known by all visitors.



Advices

Put a top in your bag; the weather changes so quickly at these altitudes.

How to come ?

Transports

The bus Grenoble - Briançon, via the Lautaret mountain pass (regional express line: LER 35).

Access

D1091 (Grenoble Briançon), col du Lautaret.

Advised parking

Laurichard car park (at the foot of Serre Orel Use the car park at Lautaret mountain pass if the first one is full.

Information desks

Information center "Col du Lautaret" (summer only)

Col du Lautaret, 05220 Le Monêtier-les-bains

brianconnais@ecrins-parcnational.fr

Tel : 04 92 24 49 74

<http://www.ecrins-parcnational.fr/>



Source



Parc national des Ecrins

<https://www.ecrins-parcnational.fr>

On your path...



Dismantled ski-lifts (A)

A small ski resort was created in 1970 not far from the Lautaret mountain pass. Due to the risk of avalanches and new standards required, alpine skiing was moved near to the village of Villar d'Arène and Chazelet hamlet. The two obsolete ski-lifts situated in this very picturesque territory, rich in terms of biodiversity, ruin this place which has been classified since 1974 as the national nature reserve of Combeynot. In 2013, dismantling was carried out by the Mixed union of ski-resorts in the Haute Romanche with the support of the National Park. In the end more than 35 tons of iron and concrete blocks were evacuated.

Attribution : Eric Vannard - PNE



Fringed sedge (B)

Protected patrimonial species which flowers between July and August, the fringed sedge is present in the sector of the Combe de Laurichard. It is the subject of a detailed prospection by the National Park. Result: on the crystalline sites of the Laurichard valley, it is not as rare as all that...

Attribution : Cédric Dentant - PNE



Rock glacier (C)

The Laurichard rock glacier has been monitored since 1979. It is the oldest research program of this type studying the morphology of glaciers. At the moment the Ecrins National Park and the scientists are studying the evolution, the speed of its advance and its volume. On the terrain, note the presence of four white spheres which are used to carry out this monitoring.

Attribution : Joël Faure - PNE



Rock Ptarmigan (D)

The cold bottom of the Laurichard valley is where the Rock Ptarmigan lives (species that is a glacial relic). Its Latin name 'Lagopus' signifies "hare's foot": this species reproduces during the warm season in the valley. It is one of the ten species of bird to be protected in priority in the heart of the National Park. Take care to stay on the path to avoid disturbing their nests...

Attribution : Robert Chevalier - PNE



Laurichard Mountain Pass (E)

The Laurichard mountain pass, at an altitude of 2654 m, offers a superb panorama over the Meije massif and the surrounding summits : le pic Gaspard, la pointe Nérot, le Bec de l'Homme,... In the South the Barre des Ecrins points its icy nose behind the Roche Faurio.

Attribution : Mireille Coulon - PNE