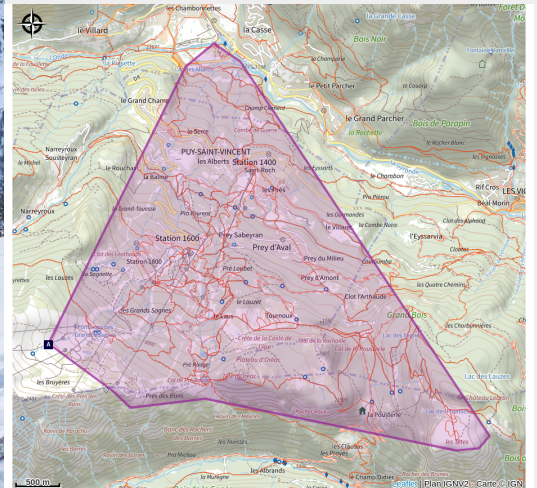


Puy-Saint-Vincent Nordic ski area

Parc national des Ecrins



Vallon du Fournel (Thibaut Blais)



A quality Nordic site without artificial snow, offering stunning views of the Pays des Écrins.

The Puy-Saint-Vincent ski resort offers 13 kilometers of ski touring trails.

This high-altitude site, with its alpine configurations and exceptional snow cover, offers you access to numerous viewpoints and unique panoramas of Mont Pelvoux, the Fournel valley and the Durance valley. You'll move between sunny plains and frozen larch forests.

Useful information

Practice : Ski touring

Themes : Fauna, Panorama, Top

Description

Coat rack, clothes locker and hot tea are available at the Nordic chalet.

Access by road:

From the N94 Gap-Briançon, turn off at l'Argentière-la-Bessée, direction Puy-Saint-Vincent.

Parking and access to the Nordic chalet:

Access from station 1400 :

Once parked at station 1400, take the Prés chairlift. At the top of the chairlift, carefully cross the downhill ski slope to reach the Nordic ski area entrance directly opposite. Once on the cross-country track, follow the signs to the Nordic chalet.

Access from station 1600 :

Once you've parked at station 1600, carefully cross the downhill ski slope to reach the shared "Accès 1600" trail (1 km one way).

Access from station 1800 :

Once parked at station 1800, access to the Nordic chalet is via the shared "Accès Pré Loubet" piste (1.5 km one way).

Access via the route du Col :

From Prey d'Aval, after station 1400, take the "Route du Col" to the Col de la Pusterle (2.5 km one way).

Useful links :

To check snow conditions and ski area opening times, [click here](#).

Information on access and transport is available in the practical info section of our website.

Access to the Nordic site is forbidden after 4:30pm.


Allow grooming in complete safety and peace of mind for drivers. When you walk or snowshoe on groomed sections, you leave tracks that will harden overnight and remain the next morning.

Think of your own safety!

Don't forget that a grooming machine in use presents risks (limited visibility inside and powerful rotating parts). Some machines are equipped with a winch with a tensioned cable that runs for almost 1,000m on the alpine ski slopes being prepared. This cable, at man's height, cannot be seen at night, and can be life-threatening.


[illegible]

- 11/23/2024 • Puy-Saint-Vincent Nordic ski area •

 The ptarmigan and the mountain hare (AW)


 The laserwort (AY)

 The aspen (BA)

 The ash tree (BC)

 The chapel of Saint-Romain (BE)

 The martagon lily (BG)


 The common raven (BI)

 Les Prés, hamlet of Puy-Saint-Vincent (BK)

 The yellow cephalaria (BM)

 The irrigation canals (BO)

 The deer (BQ)

 The architecture of La Voile in Puy-Saint-Vincent 1600 (BS)

 The house with arcades (BU)

 The clouded Apollo (BW)


 Les Eyssarts (BY)

 The wheatear (AX)

 The long-tailed tit (AZ)

 The Eurasian blackcap (BB)


 The clouded Apollo (BD)

 The church of Sainte-Marie-Madeleine-des-Prés and its two sun dials (BF)

 Tournoux (BH)

 The Fournel valley (BJ)


 The peregrine falcon (BL)

 The ski resort of Puy Saint Vincent (BN)

 Le Laus (BP)

 The Les Têtes belvedere (BR)

 The restoration of the canals (BT)

 The history of the resort of Puy-Saint-Vincent (BV)

 Reading the landscape (BX)

All useful information

Advices

The rates for activities other than cross-country skiing in the Nordic area are available [here](#) and for sale at the ski lift ticket offices as well as at the Puy Saint Vincent Nordic chalet.

Some rules:

- You undertake these routes at your own risk. Please check the weather conditions, snow conditions, and avalanche risks provided by Météo France, as well as by Tourist Information Offices or Nordic Chalets before starting.
- You must have the necessary safety equipment: avalanche transceiver (DVA), shovel, probe, and first aid kit.
- Nighttime activities in the Nordic areas are prohibited unless supervised by a professional and subject to the authorization of the slope service.
- Several routes are shared with cross-country skiers, snowshoe hikers, pedestrians, sled dogs, and trail runners. Please be cautious.
- It is forbidden to ascend along the ski slopes unless indicated by signage. In this case, you do not have priority when crossing these slopes.
- Respect the signage: dangers, prohibitions, direction of slopes, among others.
- Do not overestimate your abilities!
- Take your trash with you!
- During your off-piste ascents and descents, you may come across triangular fenced areas: these are areas for protecting the wintering grounds of the black grouse. Respect these areas and do not cross them.
- Consider bringing a guidebook to have all the information about ski touring routes at your fingertips.

Attention: This information is provided for guidance only. It is your responsibility to check the weather forecast before your departure and not to overestimate your abilities. The Tourist Office and the National Park Authority cannot be held responsible in case of accidents. If in doubt, seek advice from professionals: instructors or equipment rental shops.

Emergency contact information: Mountain Rescue: 04 92 22 22 22 or 112

Information desks

Office de tourisme de Pelvoux

Station de Ski de Pelvoux, 05340
Vallouise-Pelvoux

contact@paysdesecrins.com

Tel : 09 63 53 61 67

<http://www.paysdesecrins.com/>



Office du tourisme Puy-Saint-Vincent 1600

Les Alberts, 05290 Puy-Saint-Vincent

contact@paysdesecrins.com

Tel : 04 92 46 68 58

<http://www.paysdesecrins.com/>



Bureau d'Information Touristique de Puy Saint Vincent 1400

Les Alberts, 05290 Puy Saint Vincent
1400 m

contact@paysdesecrins.com

Tel : +33(0)4 92 23 35 80

<https://www.paysdesecrins.com/>



Bureau d'Information Touristique de Vallouise

Place de l'Eglise, 05340 Vallouise

contact@paysdesecrins.com

Tel : +33(0)4 92 23 36 12

<https://www.paysdesecrins.com/>



Bureau d'Information Touristique de L'Argentière-La Bessée

23 Avenue de la République, 05120

L'Argentière-La Bessée

contact@paysdesecrins.com

Tel : +33(0)4 92 23 03 11

<https://www.paysdesecrins.com/>



Source



Pays des Ecrins

<https://www.paysdesecrins.com>

On your path...



The chenevières, hemp fields (AA)

There is a French saying «Avril donne le fil», meaning that April is string time. Sown in spring after the last frosts, the tall stems of hemp grow in tiny plots of ground, called chenabiers or chenevières. The hemp is cut at the end of August and the strands are immediately immersed in large holes filled with water - called the naïs - on the edge of wet meadows. They are left to steep for more than a month, in order to release all the gum that binds the plant fibres together.

Attribution : PNE



Hemp production (AB)

At one time, almost every winter evening would be taken up by stripping the fibre from the hemp straw. The strands had to be broken one by one, to remove the long, flexible filaments. Once washed and combed, these «balls» of hemp were taken to the rope and yarn spinners to be turned into rope, blankets and cloth for garments. When a family ordered cloth from the weaver, the entire family would go to the loom to attach the threads onto the warper.

Attribution : PNE



The commons (AC)

As «crosswise» as it might be, from end to end the main street of Puy-Saint-Vincent has every building the community needs. The mill is still here, complete with its intake and outlet mill races. The communal oven is lit on 14 July every year. It has just been restored and shares the little paved square with a lovely water fountain, made from wood and ringed with iron.

Attribution : PNE



The church of Sainte-Marthe (AD)

The church of Sainte-Marthe was built in the nineteenth century, in 1817 to be precise, as indicated at the top of the pediment. Only the main facade has a painted decoration. On two superimposed levels and on the gables, pilasters or false pillars frame either bay windows illuminating the nave, or panels painted with a false marble decoration. A few steles remind us of the present of the former cemetery. Included on the Supplementary Inventory of Historical Monuments, this church also contains a commemorative plaque honouring those who fell in the First World War.

Attribution : Marie-Geneviève Nicolas - PNE



Solid architecture (AE)

Originally, the environment of the high valleys of the Pays des Écrins offered little space, in which men and animals cohabited. Unlike in Vallouise, where the architecture is a harmonious blend of arcades and decorative elements, the houses in Le Puy retain the rusticity of completely stone-built single block construction with half-hipped roofs protruding over a drying balcony. This roof extension protects the main facade from bad weather, snow in particular. People can move about under shelter and the firewood store stays dry all winter. This barrel vaulted porch, which shelters the entrance to the main building and the stable, mirrors the Champsaur-Valguademar, «toute» (ground level arcade).

Attribution : PNE

Protective shelter (AF)

Separate from the main building and at a distance from the barn, some property owners also have a small building providing safety from the much feared home fires. Here, in the coolness of this outside cellar, they stored ham, cheeses, flour, salt and other foodstuffs, but also whatever the family owned by way of valuables.



✿ Wood cranesbill (AG)

The path is edged with large clumps of a plant with purple flowers, the wood cranesbill. The leaves are palmate and divided into 5 to 7 incised and indented lobes. This common plant grows in meadows and cool woods. The «geraniums» we see on balconies are in fact pelargoniums, distant cousins originally from South Africa and cultivated for ornamental purposes.

Attribution : Marc Corail - Parc national des Écrins



🦉 The Eurasian pygmy owl (AH)

The call of this small, nocturnal bird of prey can be heard in the spring, and also in the autumn when it can utter some peculiar sounds. Active during daytime hours and at dusk, the pygmy owl is a predator of passerine birds and small forest rodents. But when they spot it, passerines will come together in large numbers to mob it, so as to prevent any attempted surprise attack. It is restricted to mountain forests where it seeks out trees with woodpecker cavities in which it builds its nest.

Attribution : Damien Combrisson - Parc national des Écrins



🦔 The northern wryneck (AI)

The old trees in the orchard are home to the northern wryneck. It has a loud song, rather like that of the green woodpecker, only slower. This bird owes its name to the extreme way it extends and twists its neck when it feels threatened. Its French name torcol fourmilier is a reference to the fact that it feeds on ants (fourmils in French). Difficult to spot because its plumage merges into the colour of the tree trunks, it gives its presence away by its song when it returns from its migration.

Attribution : Damien Combrisson - Parc national des Écrins



💧 Thne Gyronde (AJ)

No, we're not in south-west France where the Gironde flows! The Gyronde (spelt with a «y»!) is the river that flows between Vallouise and L'Argentière-La Bessée, where it flows into the Durance. It originates from the Gyr and Onde mountain streams which merge in Vallouise.

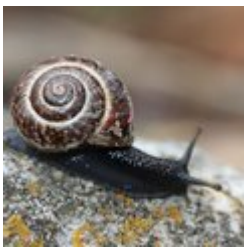
Attribution : Office de tourisme Pays des Écrins



The Vallouise Park Centre (AK)

Vallouise Pelvoux is a municipality within the Parc National des Écrins. Renovated in 2014, the Park Centre ("Maison du Parc") houses the offices of the local Park staff and has a spacious visitor reception area. It offers a permanent interactive exhibition inviting discovery of the territory and its heritage features, a temporary exhibition space on the upper floor and an audiovisual room (screenings and talks). It is currently in the process of applying for the "Tourisme et Handicap" tourism and disability label. Admission is free and so, too, are most of the activities in offer.

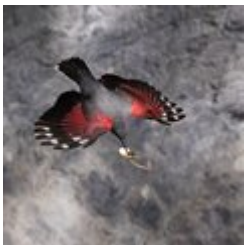
Attribution : Thierry Maillat - Parc national des Écrins



The Alpine copse snail (AL)

On the damp banks of the stream, hidden in the grass, is a snail with a beautiful golden brown shell speckled with brown, decorated with a dark spiral stripe. It has a black body. The alpine copse snail is relatively rare and, as its name suggests, it is found in the Alps. It is a sub-species of the ordinary copse snail, which is present across Europe.

Attribution : Damien Combrisson - Parc national des Écrins



Cliff-dwelling birds (AM)

The cliff is home to a variety of birdlife. The raven, not to be confused with the crow, frequently nests here. He makes an uncomfortable housemate with the peregrine falcon, a bird in sharp decline and still a vulnerable species. It, too, favours this cliff, which offers plenty of potential nesting holes. The wallcreeper, also known as the butterfly bird, also finds this a good nesting spot. Some climbing routes are closed during this bird's breeding season.

Attribution : Pascal Saulay - Parc national des Écrins



The Col de la Pousterle (AN)

A pousterle (in the local high-alpine Occitan language) is a small gate, a postern. It comes from the Latin posterula which means back door. This place name is sometimes given to a pass, which could be described as a gateway between two valleys! The glaciers carved out this gateway through which an arm stretched between the glacier occupying the Fournel valley and the glacier flowing down the Vallouise valley.

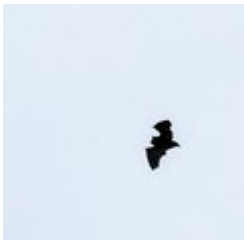
Attribution : Bertrand Bodin - Parc national des Écrins



The larch (AO)

The symbol of the Southern Alps, this softwood tree loses its leaves in winter, and is swathed with gold and lights up the mountains in autumn. The larch forests are maintained by the grazing of flocks. Without them, other trees like the fir or other pine trees could grow, creating a different kind of forest. A pioneer species, the larch establishes freely in light conditions. Its solid rot-proof wood has always been used in the construction of houses.

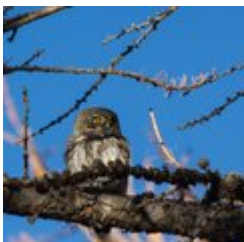
Attribution : Robert Chevalier - Parc national des Écrins



Forest-dwelling bats (AP)

Bats don't just live in caves! In summer, some forest-dwelling species shelter in old hollow trees or woodpecker holes during the day. Sometimes, the females also form little colonies here, where their young will be born (one bat pup per female). In this forest, which is still young with very few old trees, artificial roosts have been installed to help the bats and to facilitate their study.

Attribution : Mireille Coulon - Parc national des Écrins



The pygmy owl (AQ)

The call of this small, nocturnal bird of prey can be heard in the spring, and also in the autumn when it can utter some peculiar sounds. Active during daytime hours and at dusk, the pygmy owl is a predator of passerine birds and small forest rodents. But when they spot it, passerines will come together in large numbers to mob it, so as to prevent any attempted surprise attack. It is restricted to mountain forests where it seeks out trees with woodpecker cavities where it builds its nest.

Attribution : Christophe Albert - Parc national des Écrins



The Sentier du Facteur - the postman's path (AR)

In former times, the postman would take this path every day: He would set out from Vallouise, deliver letters in Puy-Saint-Vincent and drop back down to Vallouise, stopping at the hamlets of Parcher on the way. In the winter, when the snow was too deep, the Traversouires (the inhabitants of Puy-Saint-Vincent) donned their snowshoes and wielded their shovels to clear the postman's path down to Vallouise.

Attribution : Christophe Albert - Parc national des Écrins



The sun bird (AS)

So what is the identity of this sun bird? It's the royal, or golden, eagle of course. Although it is telling the time here, in the surrounding natural landscape it hunts marmots. But what becomes of it in winter when the marmots hibernate deep in their burrows? It's a lean time. It has to make do with a hare or ptarmigan, and in particular the carcasses of chamois which have not survived the winter or have been killed in an avalanche.

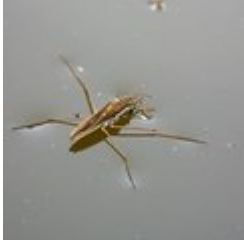
Attribution : Cyril Coursier - Parc national des Écrins



The ash tree (AT)

Even in winter, the ash can be recognised from its large black leaf buds. The leaves are compound. A pioneer species that grows easily, the ash has long been used by man for everyday needs: its foliage was used to feed cattle and its hard, flexible wood was used to make a variety of objects such as tool handles. Its French name frêne often appears in local place names too: Freissinières (frêne noir - black ash), Le Freney etc. Evidence of its historical importance to human communities..

Attribution : Marie-Geneviève Nicolas - Parc national des Écrins



The gerris (AU)

Some strange creatures are moving jerkily over the surface of the water: Gerrises, insects related to bedbugs. Like a true insect, they have six legs and they «skate» across the water using their intermediate and hind legs which are covered in hairs to make them water-resistant. They are carnivorous and anything on the water surface, dead or alive, is good to eat! They catch their prey with the forelegs, sucking up the juices with their strong proboscis!

Attribution : Bernard Nicollet - Parc national des Écrins



The wood nuthatch (AV)

With its strident calls, this little acrobat gets itself noticed. With a blue-grey back and a black stripe over its eyes, it works its way down the tree trunks upside down in search of insects. It nests in old woodpecker nests but if the diameter of the entrance is too large it reduces it with mud, to protect its young from predators. Hence its French name torchepot (a reference to edging the rim of a vessel).

Attribution : Damien Combrisson - Parc national des Écrins



The ptarmigan and the mountain hare (AW)

The rock ptarmigan, a member of the grouse family, and the mountain hare are both perfectly adapted to high-altitude life. Among other adaptations, they turn white in winter in order to escape the attention of predators, and they are grey-brown in summer. In addition, their feet are covered with feathers or fur, and act as snowshoes when moving over snow. They are particularly threatened by the increasingly early arrival of the flocks in the alpine pastures, the boom in winter tourism and climate change.

Attribution : Robert Chevalier - Parc national des Écrins



The wheatear (AX)

This bird is common in the alpine pastures and can be recognised by its grey back, its pale underside, its white rump, its white tail the shape of an inverted black "T" and by a black stripe over its eye. During the mating season, the male's underside is pinkish. Perched on a large rock, he utters a loud «uit uit» alarm call, which gives his presence away. A migratory bird, he arrives from Africa in April and flies south again in September.

Attribution : Damien Combrisson - Parc national des Écrins



The laserwort (AY)

After the bridge, a large plant with flowers arranged in umbels (in other words, an umbellifer) clings to a small rock bar to the right of the track, the laserwort. This plant belongs to the family Apiaceae, which used to be called umbellifers, and grows in dry areas. It has a distinctive feature: in autumn, the basal part of the stem breaks of its own accord and the entire plant, now dry, sets off rolling down the hillside like a large ball, or is blown by the wind.

Attribution : Cédric Dentan - Parc national des Écrins



The long-tailed tit (AZ)

Some birds are causing a stir in a tree, constantly coming and going and uttering little calls. They are round and black and pinkish beige in colour with a long tails, hence their name, the long-tailed tit. They are resident birds and always live in small groups. They inhabit forests, undergrowth and even gardens. They weave a ball-shaped nest out of lichen, moss and dry grass.

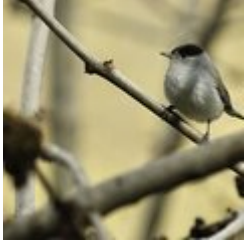
Attribution : Robert Chevalier - Parc national des Écrins



The aspen (BA)

A sizeable aspen grows on the roadside, on the edge of a small wood of fellow-aspens. This tree has a smooth, greenish trunk and rounded, crenelated leaves which take on magnificent colours in autumn. The stem, or petiole, of aspen leaves is flat and twisted, so it can be caught by the slightest breeze making the foliage «quake» hence its common name, the quaking aspen. It grows in places where the soil is quite damp.

Attribution : Bernard Nicollet - Parc national des Écrins



The Eurasian blackcap (BB)

Hidden in the tree foliage, the Eurasian blackcap announces its presence with its loud and piping song. Its head is adorned with a cap which is black in the male and russet in the female. The rest of its plumage is greyish, its underside lighter than its back. It is a migratory bird which travels to the Maghreb to overwinter. However, increasing numbers of birds make only a partial migration, flying to the south of France to spend the winter.

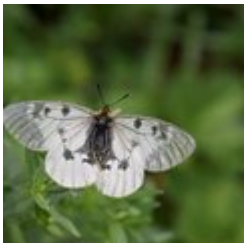
Attribution : Mireille Coulon - Parc national des Écrins



The ash tree (BC)

This is one of the most common trees, provided the ground is relatively cool. It is characterised by its pinnate leaves, that is to say, made up of several segments, and in winter it can be recognised by its large black leaf buds. The ash was extremely important in times past: its foliage was used to feed cattle and its hard, flexible wood was used to make a variety of objects such as tool handles.

Attribution : Marie-Geneviève Nicolas - Parc national des Écrins



The clouded Apollo (BD)

This butterfly with hyaline (glass-like) translucent white wings, marked with two black spots, flutters around the clearing or the edges of the forest, where the host plants of its caterpillars grow: the corydalis. Although abundant locally, it is nevertheless a species in sharp decline and is protected.

Attribution : Mireille Coulon - Parc national des Écrins



The chapel of Saint-Romain (BE)

Included on the Supplementary Inventory of Historical Monuments in 1931, the chapel of Saint-Romain has been converted into an eco museum. It was the first chapel to be built in Puy-Saint-Vincent and is thought to date from the twelfth century. Up to the mid-fifteenth century, the village bore the name of its patron saint: Puy-Saint-Romain. Then, in honour of the arrival of the Dominican monk Vincent Ferrier, the village took the name Puy-Saint-Vincent. It stands on a rocky promontory outside the village, and offers a panoramic view over the Les Écrins massif and the Gyrone Valley, over Vallouise in particular.

Attribution : Office de tourisme Pays des Écrins



The church of Sainte-Marie-Madeleine-des-Prés and its two sun dials (BF)

The charming little church of Sainte-Marie-Madeleine-des-Prés, which dates from the sixteenth century, stands in the hamlet of Les Prés. It is surrounded by a wall and a cemetery. On the walls of the church, two sun dials can be seen, both engraved and painted on plaster in 1718. The first is above the door, telling the time in the afternoon, bearing the saying « *for a moment of delights, an eternity of torments* » which alludes to the life of Saint Mary Magdalene, the well-known sinner who is venerated as a model of penitence. The second, telling the time in the morning, bears the Latin phrase *Ars longa, vita brevis* which translates as « learning is long, life is short ».

Attribution : Office de tourisme Pays des Écrins



The martagon lily (BG)

In cooler spots, the path is edged by large plants such as the wood cranesbill, which has purple flowers, and the martagon lily. This superb plant has large hanging flowers with curved-back petals, which are pink speckled with purple and exposed orangey stamens. Its leaves are elongated and whorled. It grows in meadows and cool woods. Although common here, it is rare in many French regions. In fact, picking it is prohibited or regulated.

Attribution : Marie-Geneviève Nicolas - Parc national des Écrins



Tournoux (BH)

The Tournoux plateau is a small paradise with its cool meadows, its occasional renovated chalets made from stone and larch wood and its view over the Tête d'Aval, an imposing limestone peak forming part of the Montbrison massif. Whether on a mountain bike, on foot or on cross-country skis in the winter, this spot is always an invitation to stop for a break!

Attribution : Jan Novak



The common raven (BI)

A hollow "caw" makes you lift up your head (careful not to trip!). A pair of common ravens is nesting near here (they pair for life), on a cliff face. Although bigger than its cousins the carrion crow and the rook, it can be identified by its rather lozenge-shaped tail. It almost became extinct due to persecution Yet it's an omnivore and, more particularly, a scavenger which plays an important role by cleaning up disease-prone carcasses.

Attribution : Chevalier Robert - Parc national des Écrins



The Fournel valley (BJ)

This is the southern side of the Col de la Pusterle and its view over the very long Fournel valley, known for its mines, ice waterfalls, blue thistles, its canyon and other treasures. Lower down is L'Argentière-la-Bessée. At the highest point, right in the distance, is the Champsaur!

Attribution : Jan Novak



Les Prés, hamlet of Puy-Saint-Vincent (BK)

Le Prés is one of the main hamlets of Puy-Saint-Vincent. Like Le Puy and Les Alberts, it stands on a flat plateau which is a glacial escarpment left by the now-retreated Gyronde glacier. Like Prey d'Aval, Prey du Milieu and Prey d'Amant, its name is a reminder that prior to the development of the ski resort, the land here used to be shared by meadows and crops.

Attribution : Marie-Geneviève Nicolas - Parc national des Écrins



The peregrine falcon (BL)

Cries echo around the cliffs. A pair of peregrine falcons nests there regularly. A real "fighter plane" with tapered wings, it is a formidable predator of pigeons and other birds. It came very close to extinction because of pesticides, but it remains endangered because the eggs are still stolen for the falconry trade, even though it is a protected species. It is also sensitive to disturbance. Climbers are urged not to climb in this area in the spring.

Attribution : Fiat Denis - Parc national des Écrins



The yellow cephalaria (BM)

Rather like a tall scabious (up to 2 metres) but with pale yellow flower heads, this is not a common plant. Yet, at an intersection of two tracks, it has established on a small patch of ground. Who knows why! It is a mountain plant which only lives in the west of the Alpine Arc..

Attribution : Marie-Geneviève Nicolas - Parc national des Écrins



The ski resort of Puy Saint Vincent (BN)

The original resort was created in Les Prés in 1968. Then, 1974 saw the start of construction Grande Barre 1600, which in every respect chimes with the tourist architecture of the 1970s. The new 1800 resort, with its wood and stone chalets, dates from 2005: more modest sizes, more sympathetic materials similar to local species. It's the third generation of the resort.

Attribution : Office de tourisme du Pays des Écrins



The irrigation canals (BO)

The route follows a canal side for a short distance. Numerous canals brought water from the Torrent de la Combe mountain stream to the fields which take up a large area around the villages of Puy-Saint-Vincent. In fact, the slopes just above these fields did not provide sufficient water, making it necessary to create this large network of irrigation canals.

Attribution : Office de tourisme du Pays des Écrins



Le Laus (BP)

A number of old alpine pasture chalets or hamlets, often renovated, are dotted across the Puy-Saint-Vincent resort. These are the Chalets du Laus. Le Laus is a place name designating a lake. In fact, just after the chalets, although not a lake, there is a flat, marshy area which is no doubt a small filled-in lake. So no point in bringing your pedalo!

Attribution : Marie-Geneviève Nicolas - Parc national des Écrins



The deer (BQ)

Deer are well-established across the Pays des Écrins. You can spot clues as to its presence: hoof prints or droppings, often in little piles. The stag loses his antlers at the end of winter (February-May) and they regrow up to the end of August. They reach full development before the rutting season (September), when you can hear the rutting call. The doe has no antlers.

Attribution : Telmon Jean-Philippe - Parc national des Écrins



The Les Têtes belvedere (BR)

This belvedere is worth the diversion, not only for its unrestricted panorama over the Fournel and Durance valleys but also for the place itself, with its sparse mature larches and the bare limestone scored with small fissures. These were created by the erosion of the rock by cold snowmelt waters or rain.

Attribution : Thibaut Blais



The architecture of La Voile in Puy-Saint-Vincent 1600 (BS)

The construction of this large building complex, the highest part of which is known as « La Voile » (the sail), was started in 1973 by a team of investors responsible for developing the 1600 ski resort. Designed by the Grenoble-based architect, Michel Ludmer of the Les 3A firm of architects, this tiered construction hugs the slopes with its silhouette, its soaring design structured around a mast, like the sail of a yacht sailing in a sea of snow. La Voile was inspired by iconic buildings in other tourist resorts, like the « Paquebot des Neiges » (the snow liner) in La Plagne and the « La Grande Pyramide » (great pyramid) in La Grande-Motte. Although still misunderstood, this architecture which presents numerous advantages (like restricting the use of space) might well merit a « Twentieth Century Heritage » label.

Attribution : Jan Novak



The restoration of the canals (BT)

Water is essential to farming in our territory because of the relatively dry Mediterranean climate with hot summers. To compensate for this, our ancestors created artificial water courses, the canals. These performed a dual role because they served not only to irrigate the hay meadows, kitchen gardens and grain fields, but also to prevent torrential flooding by acting as drains. Today, the canals are still used and managed by associations which work to keep them operational and to maintain them, several times a year.

Attribution : Office de tourisme du Pays des Écrins



The house with arcades (BU)

In the municipality of Puy-Saint-Vincent, there are a number of houses typical of the rural architecture of Vallouise, in particular houses with arcades, in the hamlets of Les Alberts and Les Prés. This type of construction can be recognised by the presence of large arches made from stone from the Montbrison massif and supporting walking galleries. Introduced in the eighteenth century by Piedmontese master masons who settled in the valley, this style with arcaded galleries has become characteristic of the architecture of the Vallouise valley. Elegant and monumental, they replaced modest wooden balconies. They facilitated mobility from one level of the house to the other (the houses did not have interior stairs), and at the same time signalled the wealth of the owner.

Attribution : Office de tourisme du Pays des Écrins



The history of the resort of Puy-Saint-Vincent (BV)

Puy-Saint-Vincent is the benchmark resort in the Vallouise. Located on the north-facing side of the valley, it is constructed on three levels, each corresponding to a different period of construction: 1400, developed in the late 1970s, 1600, developed from 1973 onwards and 1800, developed from 2005 onwards. Each level is served by a chairlift to reach the skiing area. It now has 35 pistes covering 75.4 kilometres.

Attribution : Office de tourisme du Pays des Écrins



The clouded Apollo (BW)

White, almost translucent in places, with just a few black spots, this butterfly is a cousin of the better-known mountain Apollo. It lives in clearings in open woods where the plant on which the female lays her eggs grows, and on which its caterpillars feed: the corydalis. It is a mountain butterfly.

Attribution : Gourreau Jean-Marie - Parc national des Écrins



Reading the landscape (BX)

The Vallouise valley is a tributary valley on the right-hand bank of the Durance. It is made up of three municipalities: Vallouise-Pelvoux, Les Vigneaux and, looking down from the heights, Puy-Saint-Vincent. This 25 km-long valley is dominated by numerous peaks, ranging in altitude from 980 metres, at the confluence of the Durance, to the peak of the Barre des Écrins at 4,102 metres (the highest point in the Les Écrins massif) and covers 18,541 hectares. Lying at the centre of the crystalline massif, the Vallouise valley is the gateway to the Parc National des Écrins and boasts exceptional and varied landscapes and a diverse wealth of fauna and flora.

Attribution : Office de tourisme du Pays des Écrins



Les Eyssarts (BY)

The track runs through a place called Les Eyssarts, which gave this circuit its name. This name comes from the word essart which refers to «a place that has been cleared, most often to create agricultural land». A few meadows, but above all former canals and low walls hidden under the advancing forest, bear witness to this past use of the land.

Attribution : Dominique Vincent - Parc national des Écrins