

Freissinières Nordic ski area

Parc national des Ecrins



Panorama sur la plaine de Freissinières depuis l'itinéraire vers la Tête des Raisins (Thibaut Blais)



Open from mid-December to mid-March, depending on snow conditions, the ski area boasts some fifteen kilometers of trails. It can accommodate both skating and Nordic skiing.

The Freissinières Nordic ski area stretches across the great plain between the Bois de Monsieur in the south and the Biaysse and Freissinières cliffs in the north.

Useful information

Practice : Ski de fond

Rating scale :

Level : Beginners track, Good level skiers track, Experienced skiers track

Themes : Fauna, Flora, History and architecture

Description

To view the domain's snow conditions, click [here](#).

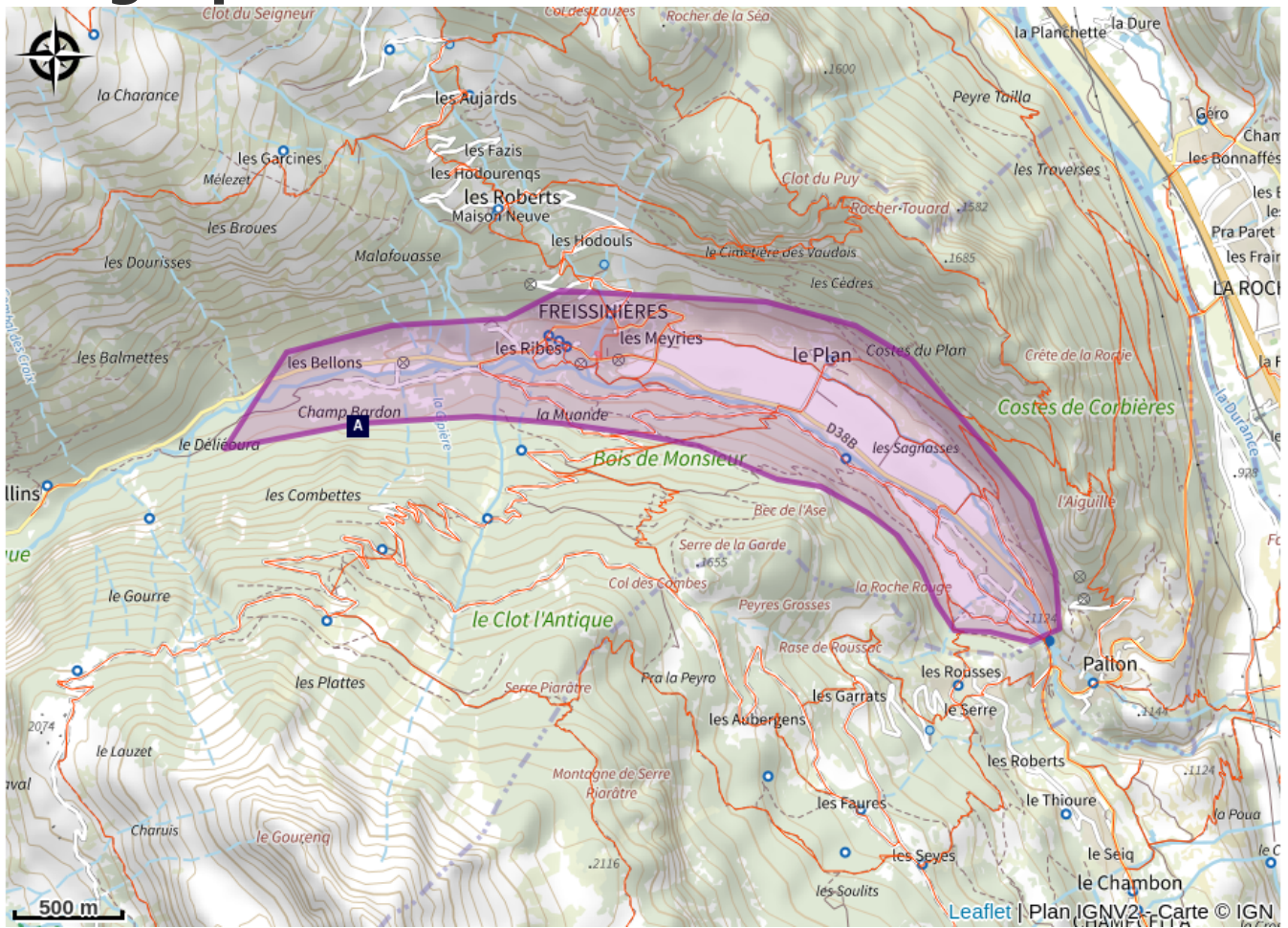
The site presents no particular difficulties. The routes are mainly flat, sometimes with gentle slopes.

The itineraries are therefore accessible to all types of skiers: beginners, amateurs or training.

Grooming generally takes place on Tuesday and Friday evenings, depending on weather conditions (variable from year to year).

The site operates on a voluntary entry system. Passes are sold at the Nordic hut, at the day rate of 7 euros for adults and 5 euros for under-16s.

Geographical location



All useful information

Advices

A few rules:

- **Cross-country ski trails are groomed, marked and secured. Access is subject to a fee and reserved for Nordic skiers.**
- **You use these trails under your own responsibility: find out about weather conditions, trail closures, don't overestimate your possibilities.**
- **Respect the signs: trail directions, dangers, prohibitions, closures.**
- **Dogs are forbidden on cross-country ski trails.**
- **It is dangerous and forbidden to use the pistes outside opening hours (presence of grooming equipment).**
- **Take your garbage with you**

Please note that routes are possible in skating or classic technique (alternative).

Conditions are very pleasant all day long in winter. However, from March onwards, it's best to practice in the mornings, as some of the pistes can be quickly exposed to the sun.

Cross-country ski passes can be purchased at the Chalet nordique. Don't forget to bring your trail map!

Please note: this information is for guidance only. It is your responsibility to check the weather report and conditions before you set off. The Tourist Office and the Parc national des Écrins cannot be held responsible in the event of an accident. If you have any doubts, please contact the professionals: instructors or equipment hire companies.

Emergency contact details: Secours Montagne: 04 92 22 22 22 or 112

Accessibility

Access: from the N94 Gap-Briançon, take the D38 then the D38b towards Freissinières.

Information on access and transport is available on our website: <https://www.paysdesecrins.com/infos-pratiques-hiver/acces-et-transport>

Parking: we recommend that you park at the Chalet Nordique, opposite the

Freissinières town hall, if you wish to purchase a Pass at the chalet. The cross-country ski trails start from here.

If you already have your Pass, you can also start from the parking lot on the right 300 m after crossing the bridge out of the hamlet of Pallon, as you enter the Freissinières valley. The Grande Plaine circuit starts from this parking lot. You can also reach the Nordic chalet by continuing along the Mini Plaine trail.

i Information desks

Office de tourisme de Pelvoux

Station de Ski de Pelvoux, 05340
Vallouise-Pelvoux

contact@paysdesecrins.com

Tel : 09 63 53 61 67

<http://www.paysdesecrins.com/>



Bureau d'Information Touristique de Puy Saint Vincent 1400

Les Alberts, 05290 Puy Saint Vincent
1400 m

contact@paysdesecrins.com

Tel : +33(0)4 92 23 35 80

<https://www.paysdesecrins.com/>



Office du tourisme Puy-Saint-Vincent 1600

Les Alberts, 05290 Puy-Saint-Vincent

contact@paysdesecrins.com

Tel : 04 92 46 68 58

<http://www.paysdesecrins.com/>



Bureau d'Information Touristique de Vallouise

Place de l'Eglise, 05340 Vallouise

contact@paysdesecrins.com

Tel : +33(0)4 92 23 36 12

<https://www.paysdesecrins.com/>



Bureau d'Information Touristique de L'Argentière-La Bessée

23 Avenue de la République, 05120

L'Argentière-La Bessée

contact@paysdesecrins.com

Tel : +33(0)4 92 23 03 11

<https://www.paysdesecrins.com/>



Source



Pays des Ecrins

<https://www.paysdesecrins.com>